



MARINE & FRESHWATER RESEARCH INSTITUTE

Oceanographic and Fisheries Research Vessel



Þórunn Þórðardóttir HF-300



Þórunn Þórðardóttir is currently under construction (2022-2024). The vessel is a multi purpose research vessel, designed for oceanographic and fisheries research in temperate and arctic waters. The propulsion system is of diesel electric type with batteries to secure low noise levels. The vessel is equipped with sophisticated electronic equipment for stock assessment, bottom mapping and communication.

R/v Þórunn Þórðardóttir HF-300

IMO No.:	TBD
MMSI No.:	TBD
Call Sign:	TFXX
ICES Shipcode:	TBD
Flag:	Icelandic
Homeport:	Hafnafjörður
Classification:	Multi-Purpose Research Vessel LR Ice Class 1B
Building Year:	2024 (Currently in Building)
Yard:	Armon Shipyard, Vigo

Main Dimension:

Length o.a.:	69,80 m
Length p.p.:	64,90 m
Breadth mld.:	13,20 m
Depth to Trawl Deck:	8,50 m
Max Mean Draft:	5,70 m
Gross Tonnage:	TBD
Speed:	TBD
Bollard Pull:	TBD
Range:	TBD
Accommodation:	13 Crew/17 Scientists/Hospital

Propulsion

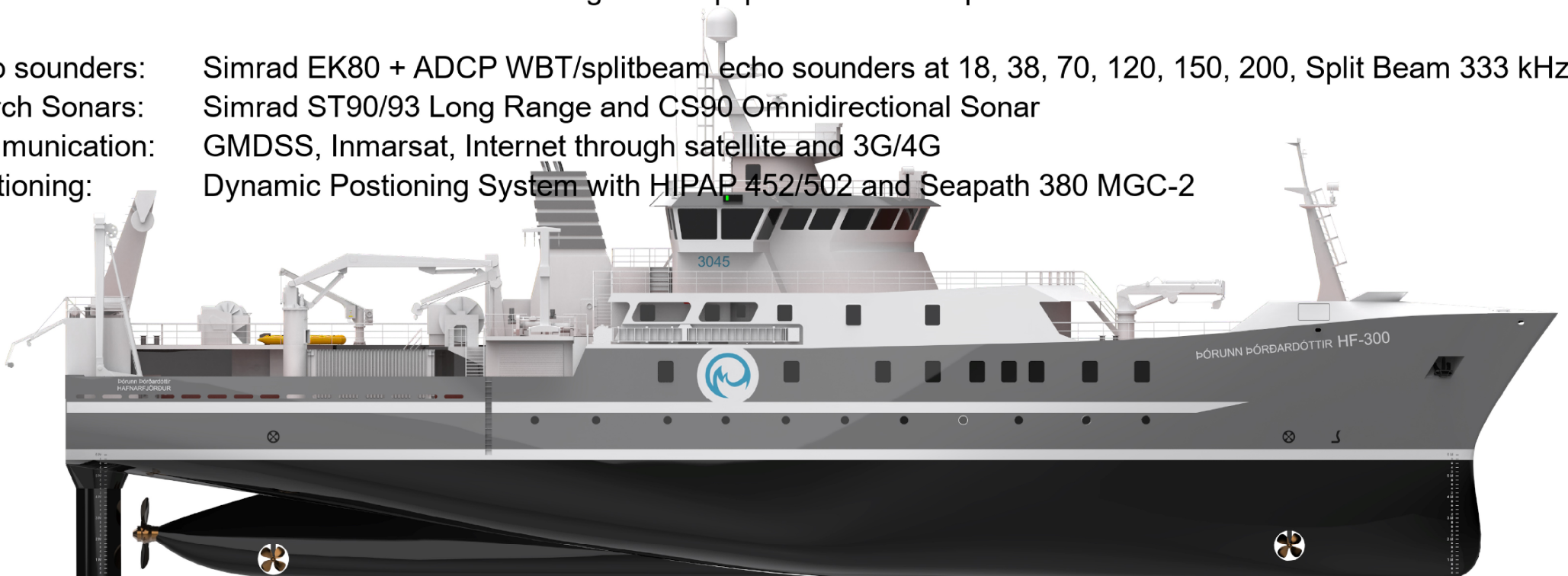
The diesel electric propulsion system is based on four diesel engines and one direct coupled AC propulsion motor.

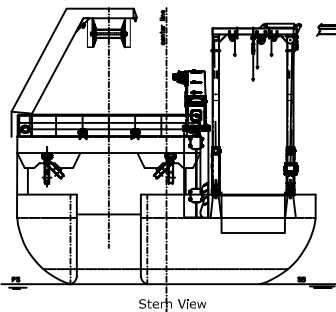
Engines:	ABC 8/6 DZC 1500/1000 kW - Volvo Penta D13-MG RC 420kW
Battery:	600 kWh battery pack
Propulsion motor:	Indar AC 1800kW
Propeller:	Balino 4m Diameter in Nozzle, 125 rpm/min
Thrusters:	Tees White Gill Pump Jet 740 kW Bow Thruster Schottel 400kW Stern Thruster

Electronics:

The vessel is equipped with a retractable keel for the echo sounders transducers. The keel can be lowered 3,5 m below the vessel hull, which greatly reduces noise due to wind and waves as well as flow noise from the vessel hull. The keel can be raised above lower decks which makes retrofitting other equipment a viable option.

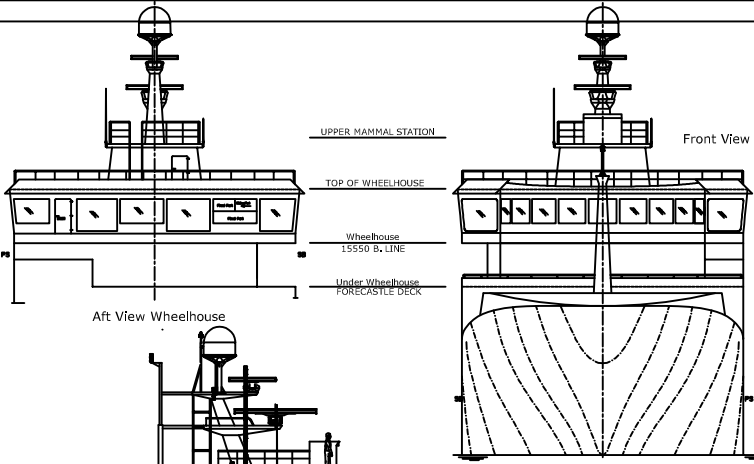
Echo sounders:	Simrad EK80 + ADCP WBT/splitbeam echo sounders at 18, 38, 70, 120, 150, 200, Split Beam 333 kHz
Search Sonars:	Simrad ST90/93 Long Range and CS90 Omnidirectional Sonar
Communication:	GMDSS, Inmarsat, Internet through satellite and 3G/4G
Positioning:	Dynamic Positioning System with HIPAP 452/502 and Seapath 380 MGC-2





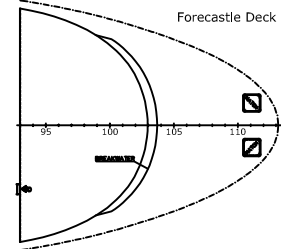
Stern View

DECK EQUIPMENT		
POS.	QUAN.	DESCRIPTION
01	2	TRAIL WINCH
02	4	SWEEPING WINCH
03	2	COLSON WINCH
04	1	NET DRUM
05	1	COB END WINCH
06	1	OUTRIGAL WINCH
07	4	BACK STOP WINCH
08	2	TRAIL WINCH
09	2	COLSON WINCHERS
10	3	OUTRIGAL WINCHES HALLER
11	1	GENERAL PURPOSE WINCH
12	1	NET SOLDER WINCH
13	1	DOUBLE DRUM GEN. HYD. WINCH
14	1	COB WINCH
15	1	GENERAL PURPOSE WINCH
16	1	WINCH FOR DROP KEEL
17	1	HOV WINCH
18	1	ANCHOR WINCH
19	1	DECK CRANE 1
20	1	DECK CRANE 2
21	1	STEER GANTRY
22	1	SIDE GENTRY
23	1	CRANE 2

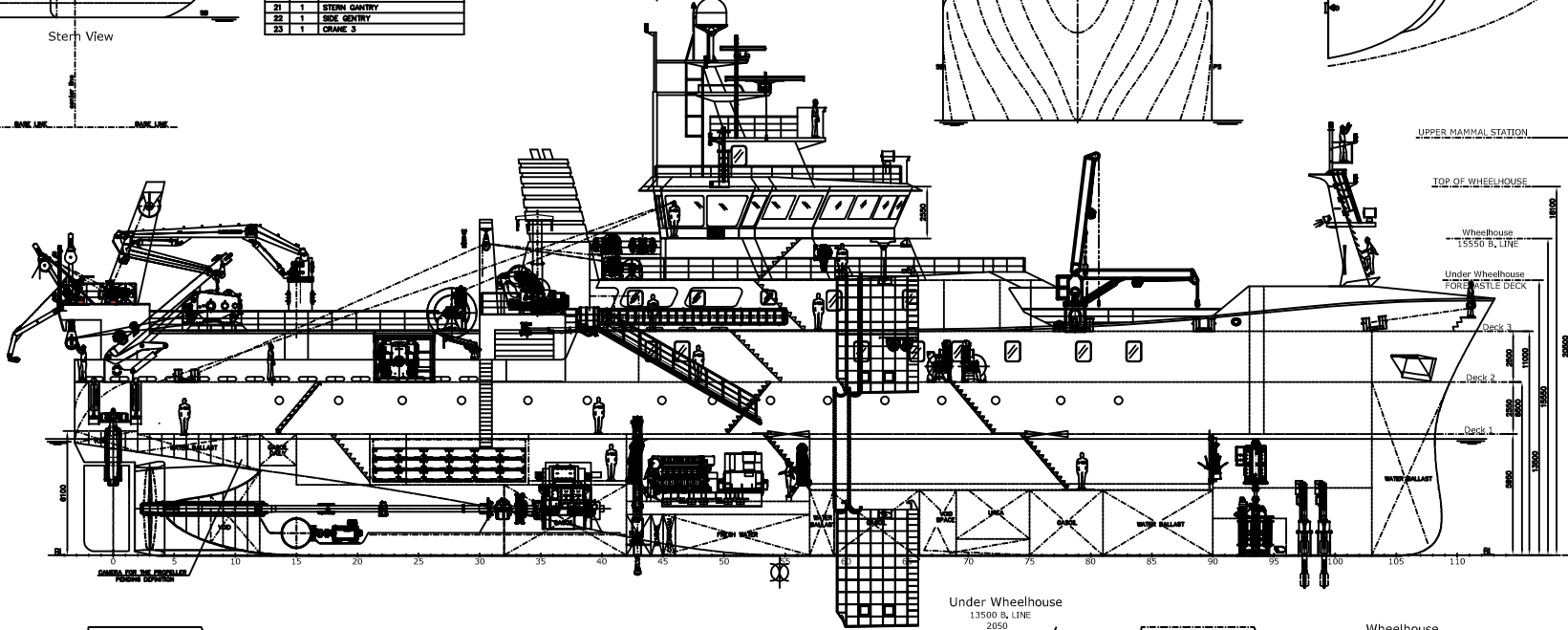


Front View

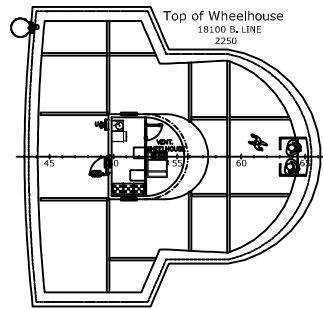
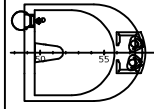
Aft View Wheelhouse



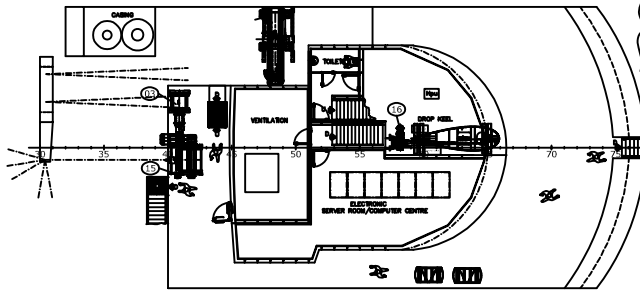
Forecastle Deck



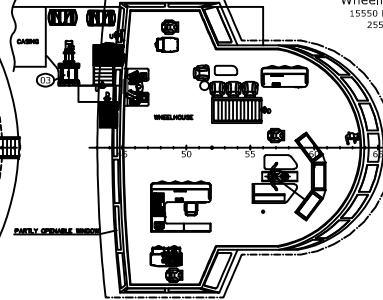
Upper Mammal Station
20500 B. LINE



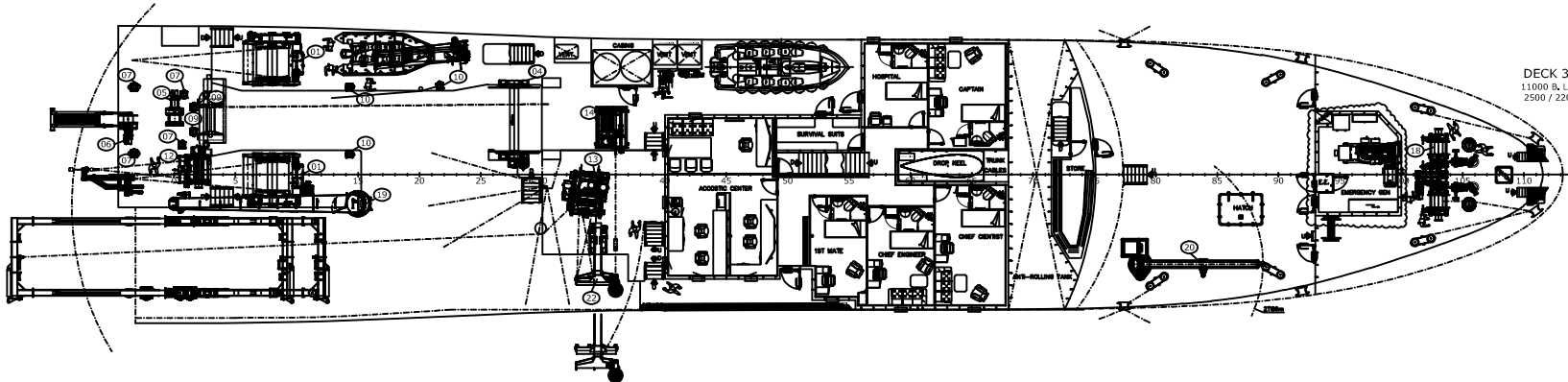
Top of Wheelhouse
18100 B. LINE
2250



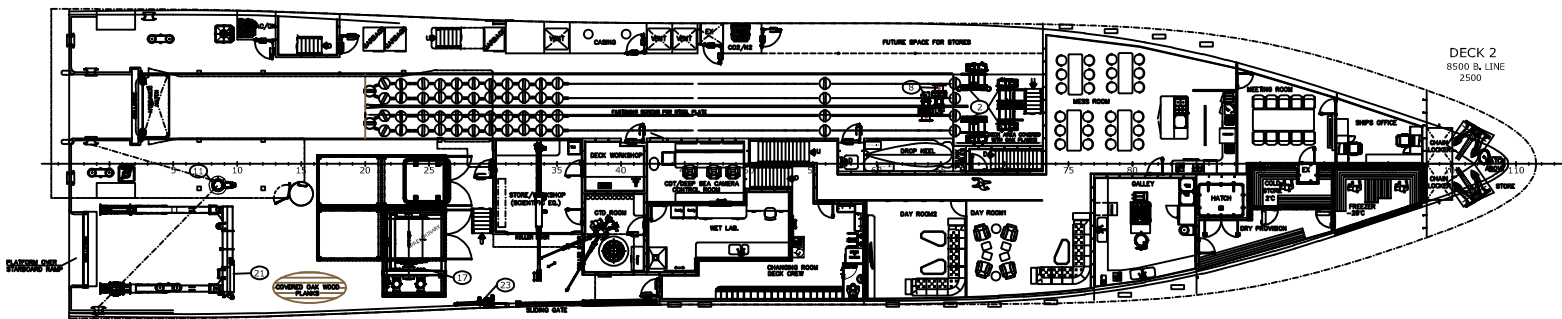
Under Wheelhouse
13550 B. LINE
2050



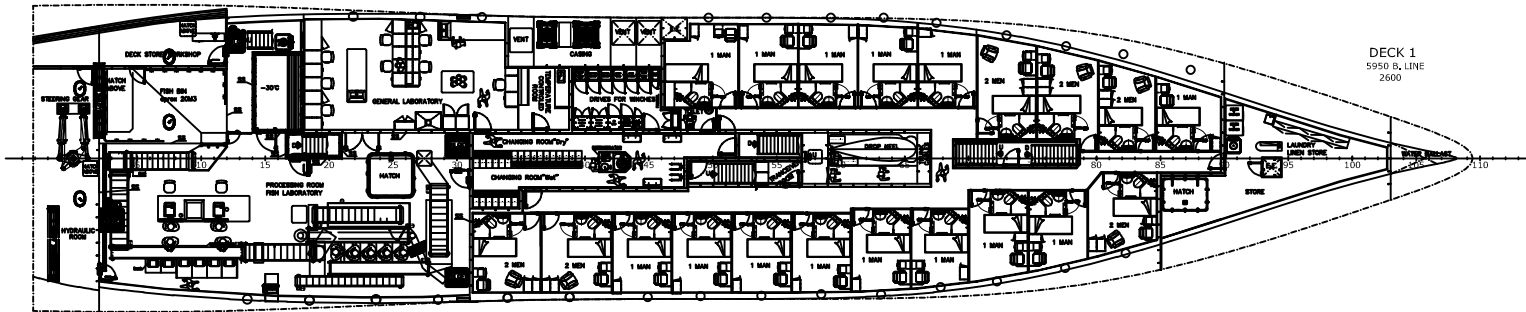
Wheelhouse
15550 B. LINE
2550



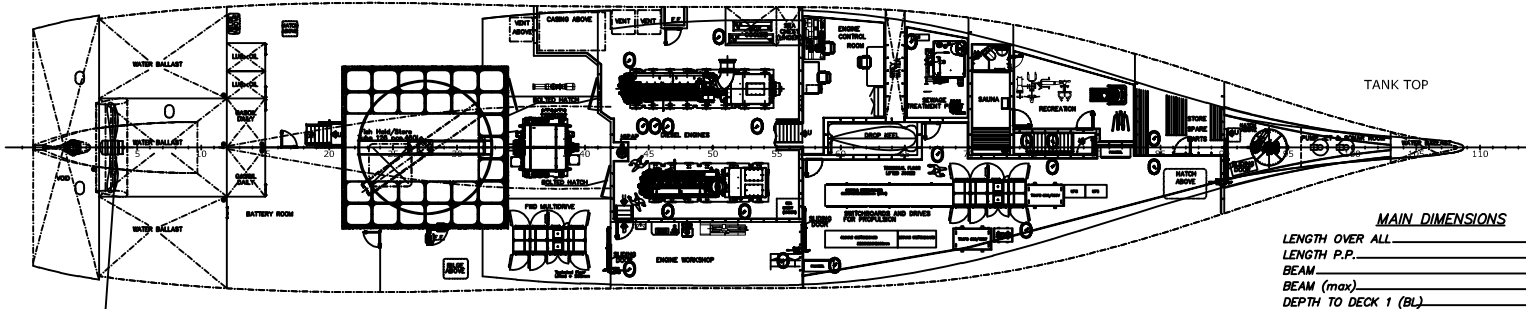
DECK 3
11000 B. LINE
2500 / 2200



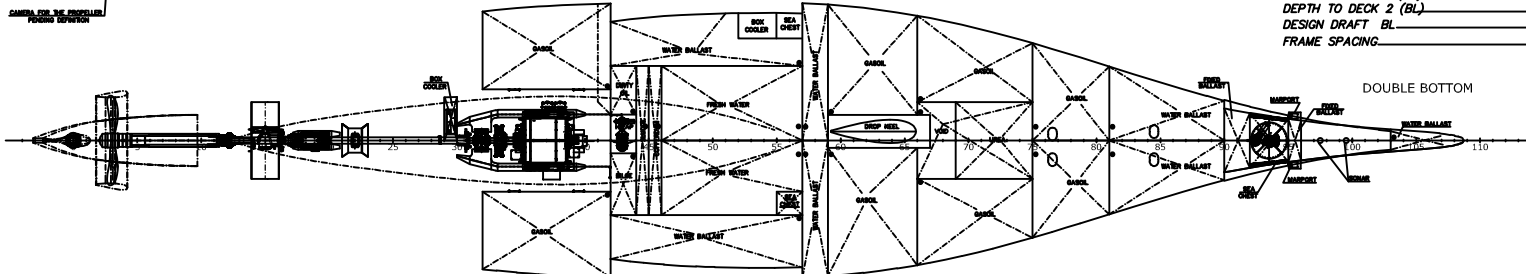
DECK 2
8500 B. LINE
2500



DECK 1
5950 B. LINE
2600



TANK TOP



DOUBLE BOTTOM

MAIN DIMENSIONS

LENGTH OVER ALL	69,80 m
LENGTH P.P.	64,90 m
BEAM	13,20 m
BEAM (max)	13,20 m
DEPTH TO DECK 1 (BL)	5,95 m
DEPTH TO DECK 2 (BL)	8,50 m
DESIGN DRAFT BL	5,70 m
FRAME SPACING	0,80 m

REV.	DATE	REV. DESCRIPTION
M	20.07.2023	UPDATE
L	27.01.2023	UPDATE
K	28.01.2023	UPDATE
J	24.01.23	UPDATE
I	30.11.22	UPDATE

L. MARTINEZ
J. MARTINEZ
M. FIGUERO
J. MARTINEZ
JOSE A.
SIGN:

SKIPASYN
ICELANDIC

70M Research Vessel
GENERAL ARRANGEMENT

Project: Iceland
Telephone: (354) 241 8500
E-mail: skipasyn@skipasyn.is

FORMAL: A1
SCALE: 1/150
DRAWING NO: 100-01

DATE	DESIGN	CHECKED BY:	SCALE	PAGE
08.02.2021	SB		1/150	1(1)