

# LÝSA – WHITING

## *Merlangius merlangus*

### RÁÐGJÖF - ADVICE

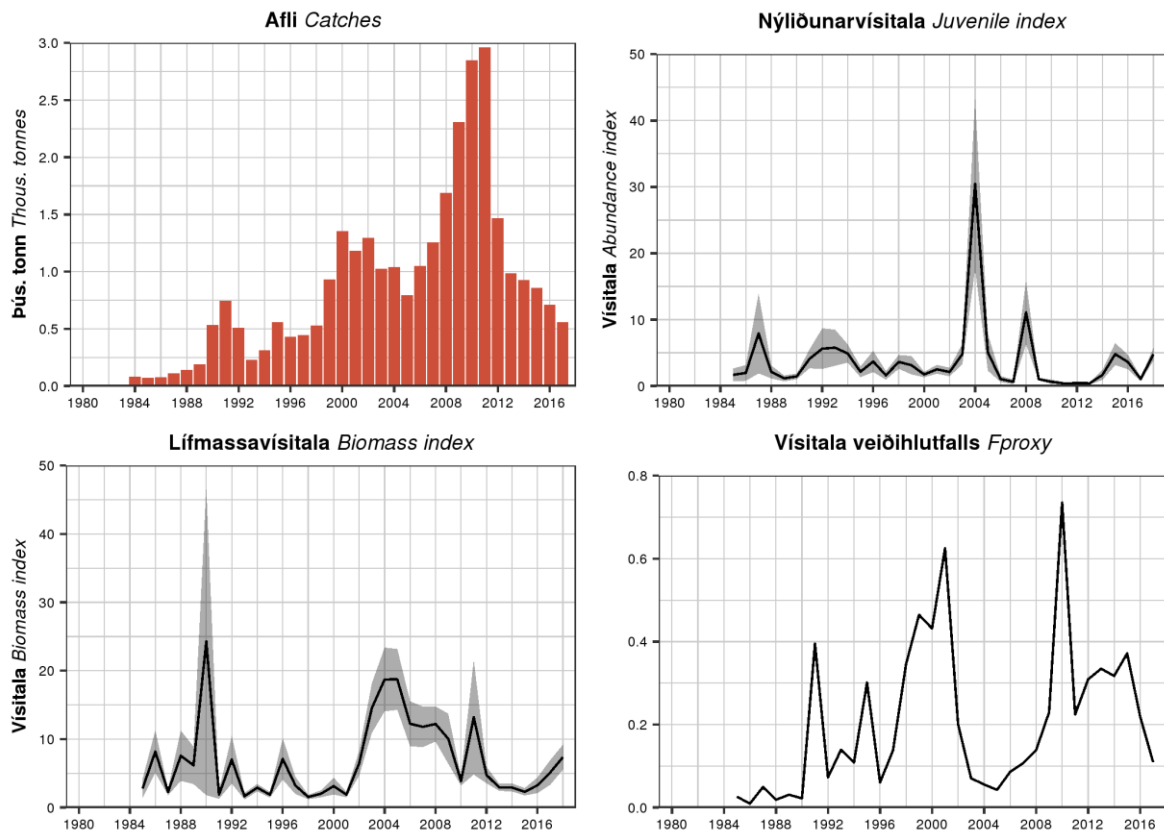
Hafrannsóknastofnun leggur ekki til aflamark fyrir lýsu fiskveiðiárið 2018/2019.

*MFRI does not give catch advice for whiting for the fishing year 2018/2019.*

### STOFNÞRÓUN – STOCK DEVELOPMENT

Lýsuafli náði hámarki 2011 en hefur minnkað síðan þá. Nýliðunarvísitala hefur verið lág frá 2009. Lífmassavísitala var í lágmarki árin 2012–2015 en hefur síðan farið hækkandi. Vísitala veiðihlutfalls var há árin 2009–2015 en hefur lækkað síðan.

*Catches peaked in 2011, but have decreased since then. The recruitment index has been low since 2009. The biomass index was low in 2012–2015 but has increased since then.  $F_{proxy}$  was high in 2009–2015 but has reduced in the last two years.*



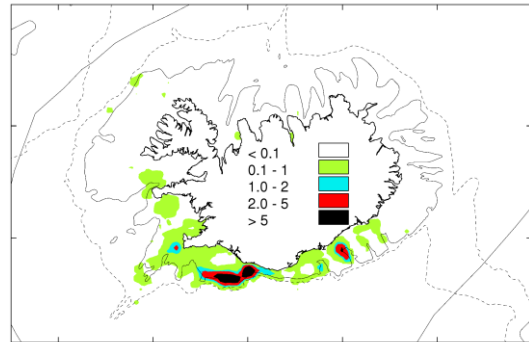
**Lýsa.** Afli, nýliðunarvísitala (<20 cm) og lífmassavísitala ( $\geq 40$  cm) úr SMB og vísitala veiðihlutfalls.

**Whiting.** Catches, IS-SMB juvenile (<20 cm) and biomass ( $\geq 40$  cm) indices, and  $F_{proxy}$ .

## VEIÐAR – THE FISHERY

Lýsa var lengi vel lítið nýtt, þó hún fengist sem meðafli við aðrar veiðar. Lýsuafli jókst mikið á árunum eftir 2005 og fór mest í tæp 3000 tonn árið 2011. Síðan hefur afli minnkað og var um 600 tonn árið 2017. Lýsa veiðist víða við sunnan- og vestanvert landið en einkum á miðunum við Vestmannaeyjar. Hún veiðist aðallega í botnvörpu og humarvörpu en einnig á línu og í dragnót.

*Whiting is a common bycatch in many fisheries and was historically discarded. Whiting catches increased after 2005 and peaked at 3000 tonnes in 2011. Since then, landings have decreased and were about 600 tonnes in 2017. Whiting is mostly caught at the southern and western part of the Icelandic continental shelf. The main fishing gear are bottom trawls, longline and demersal seine.*



Lýsa. Veiðisvæði árið 2010–2017 (t/sjm<sup>2</sup>)  
**Whiting.** Fishing grounds in 2010–2017 (t/nmi<sup>2</sup>)

Afli 2017 (tonn) Catches 2017 (tonnes)	Botnvarpa Bottom trawl	Humarvarpa Nephrops trawl	Annað Other
559	64%	8%	28%

## HEIMILDIR OG ÍTAREFNI – REFERENCES AND FURTHER READING

MFRI Assessment Reports 2018. Whiting. Marine and Freshwater Research Institute, 13 June 2018.