

WITCH – LANGLÚRA

Glyptocephalus cynoglossus

GENERAL INFORMATION

Witch is found all around Iceland, but the highest concentration is observed in the relatively warm waters south and west of Iceland. It is a demersal species found at 25-500 m depth but is most common at 50-300 m on a sandy or muddy substrate.

Females grow larger than males. Only a small proportion of males become larger than 40 cm, whereas females regularly grow larger than 45 cm. Size at sexual maturity differs between the sexes where about half of the males reached maturity at 25 cm length, but females reach that level at 32 cm.

THE FISHERY

The geographical distribution of the witch fisheries has remained more or less unchanged in recent years (Figure 1), with main fishing grounds in the southwest of Iceland, extending along the south coast in the deeper areas. Very little catch has been reported from the northwest, north and east of Iceland. Witch is common bycatch in the *Nephrops* fishery. In 2019, one of the main *Nephrops* fishing areas, Lónsdjúp, was closed for all trawling (for both *Nephrops* and demersal trawls) to protect young *Nephrops*. There was also a closure for *Nephrops* trawling in Jökuldjúp (area already closed for all demersal trawling) and demersal trawling in Breiðamerkurdjúp and Hornarfjarðardjúp (MFRI technical report 2020). Those particular closures can influence the distribution of the witch catch.

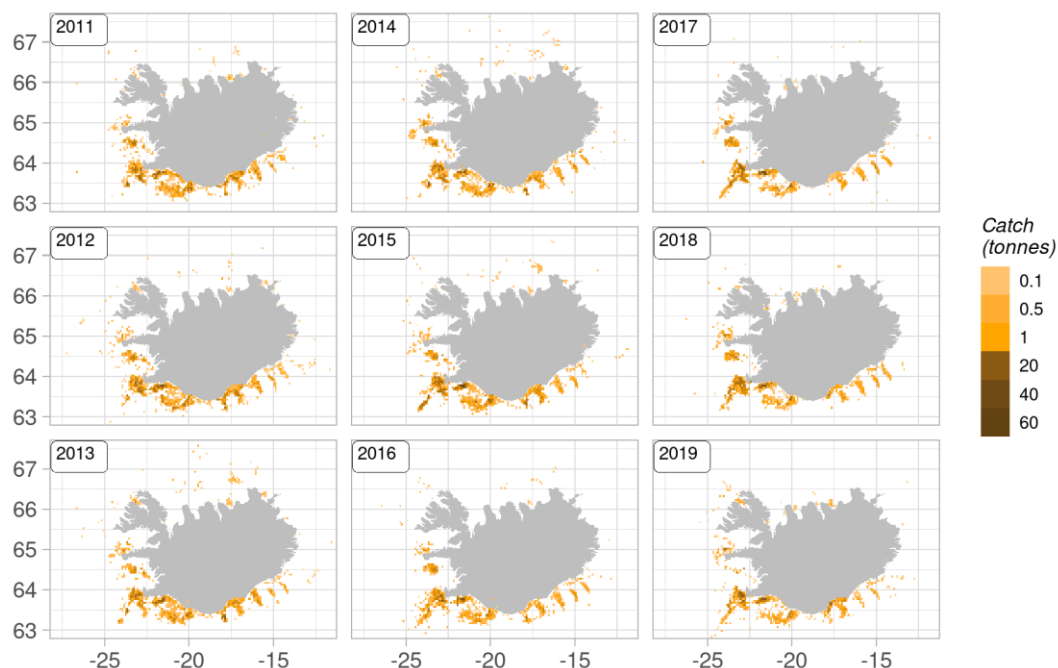


Figure 1. Witch. Geographical distribution of the Icelandic fishery since 2011. Reported catch from logbooks.

Mynd 1. Langlúra. Útbreiðsla veiða á Íslandsmiðum frá 2011 samkvæmt afladagbókum.

Since 2000, the main fishing grounds of witch have been in the southern and western part of the Icelandic shelf (Figure 2) according to logbook entries. Spatial distribution of the Icelandic witch fishery is considerably stable, with over 50% of the witch caught on the south-western part of the shelf.

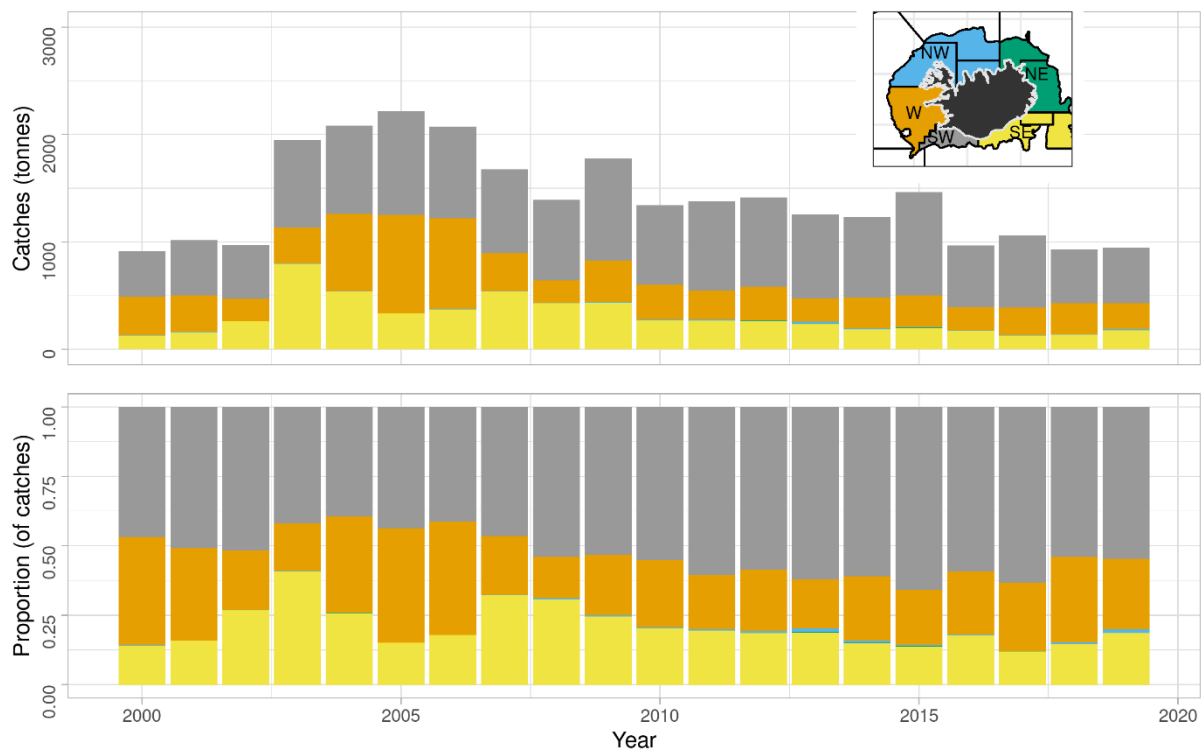


Figure 2. Witch. Spatial distribution of the Icelandic fishery by fishing area since 2000 according to logbooks. All gears combined.

Mynd 2. Langlúra. Útbreiðsla veiða á íslensku veiðisvæði frá árinu 2000 samkvæmt afladagbókum. Öll veiðarfæri samanlagt.

Of the combined catch in demersal seine and *Nephrops* trawl, about 85-90% of witch was caught at 101-200 m depth in most years (Figure 3). In 2011-2016, that proportion had declined to about 60% while the proportion of the catch taken at 51-100 m depth increased. This was solely due to increase in demersal seine effort at that depth range. Most of the catch in demersal seine was taken at 101-150 m, but at 151-200 m depth in *Nephrops* trawl.

Witch on Icelandic fishing grounds is mainly caught in demersal seine and *Nephrops* trawl, or approximately 95% of all reported landings (Figure 4, Table 1). This proportion has been a relatively stable throughout the years. During the last nine years, however, the proportion of witch landed by seiners has decreased and reported landings from *Nephrops* trawlers has increased. The drop in proportion of witch landed by *Nephrops* trawl in 2019 is most likely due to area closures in the SE and W areas mentioned previously. Since 2000, 37-83 vessels have landed over 1000 kg of witch annually (Table 1).

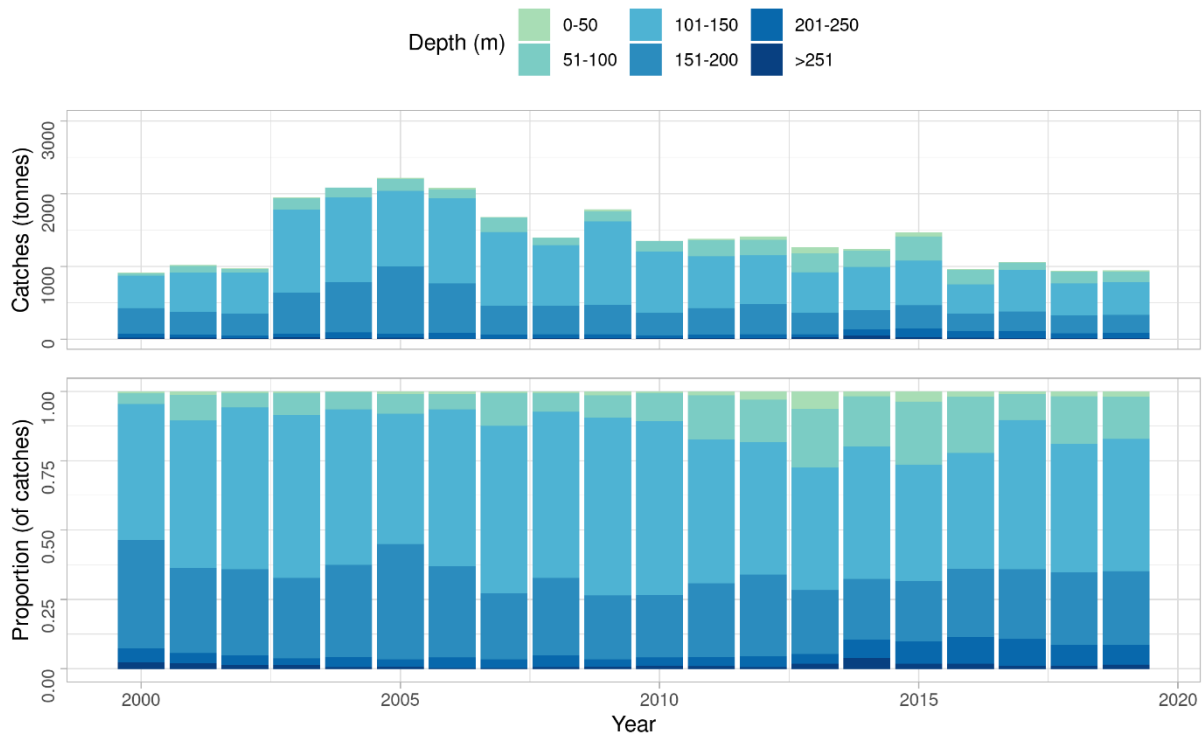


Figure 3. Witch. Depth distribution of catches according to logbooks.

Mynd 3. Langlúra. Afli samkvæmt afladagbókum, skipt eftir dýpi.

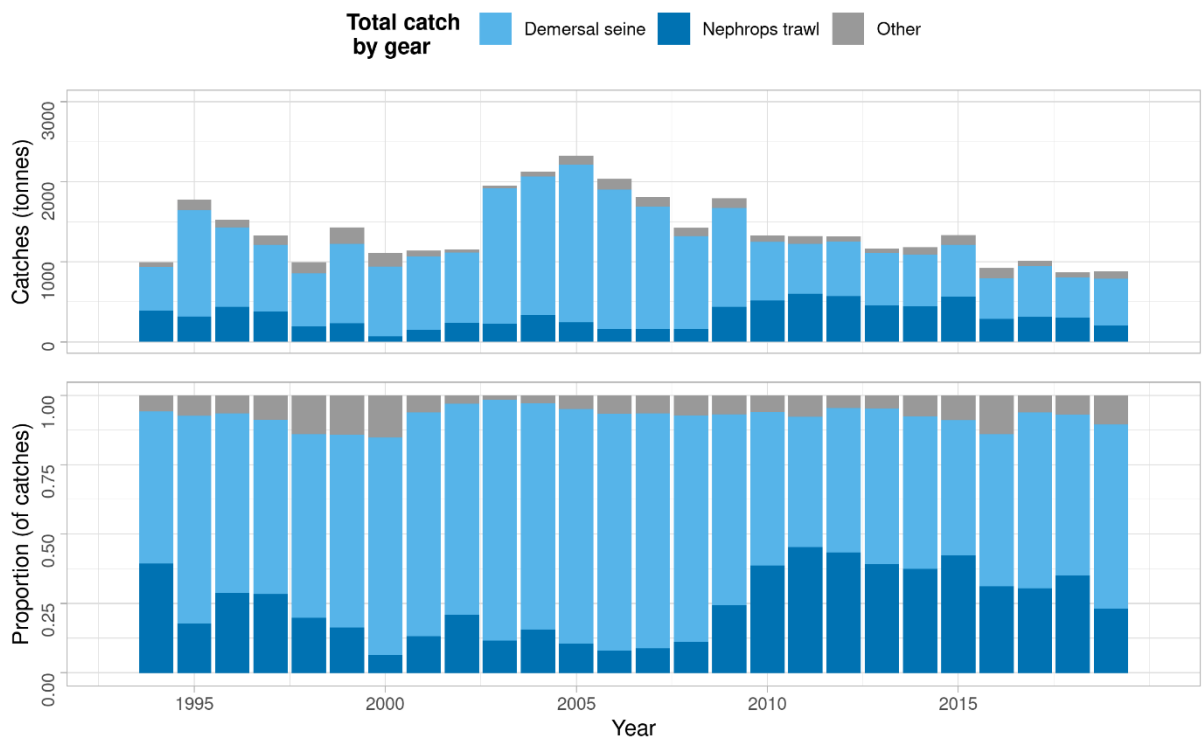


Figure 4. Witch. Total catch (landings) by fishing gear since 1994, according to statistics from the Directorate of Fisheries.

Mynd 4. Langlúra. Landaður afli eftir veiðarfærum frá 1994, samkvæmt aflaskráningarkerfi Fiskistofu.

Table 1. Witch. Number of Icelandic vessels landing 1000 kg or more of witch, and all landed catch divided by gear type.*Tafla 1. Langlúra. Fjöldi íslenskra skipa landað hafa yfir 1000 kg af langlúru og allur landaður afli eftir veiðarfærum.*

YEAR	NUMBER OF VESSELS			CATCHES (TONNES)			
	<i>Seiners</i>	<i>Nephrops trawl</i>	<i>Other</i>	<i>Demersal seine</i>	<i>Nephrops trawl</i>	<i>Other</i>	<i>Sum</i>
2000	30	19	34	877	56	165	1098
2001	26	24	18	920	136	77	1133
2002	22	27	7	874	236	37	1147
2003	31	22	9	1689	228	30	1947
2004	32	22	17	1731	334	59	2124
2005	32	23	24	1967	242	115	2324
2006	30	20	24	1738	170	122	2030
2007	26	14	26	1530	150	125	1805
2008	27	15	22	1166	158	103	1427
2009	32	16	23	1230	418	141	1789
2010	30	16	17	734	546	76	1326
2011	29	15	18	620	603	101	1324
2012	32	15	17	697	521	95	1313
2013	26	15	12	652	456	54	1162
2014	21	14	14	650	422	107	1179
2015	20	13	14	647	548	130	1324
2016	17	11	16	506	277	142	925
2017	18	9	10	641	309	63	1012
2018	20	10	9	502	304	61	867
2019	22	8	16	584	204	93	881

The number of vessels accounting for 95% of the total catch of witch in Icelandic waters decreased from about 80 vessels in 1996-1998 to about 30 vessels in 2002, despite annual catches being at similar levels (Figure 5). In 2002-2014, the number of vessels accounting for 95% of the catches (ranging from 1200-2300 tonnes) remained relatively constant. In the last three years only about 20 vessels have accounted for 95% of the annual catch of witch.

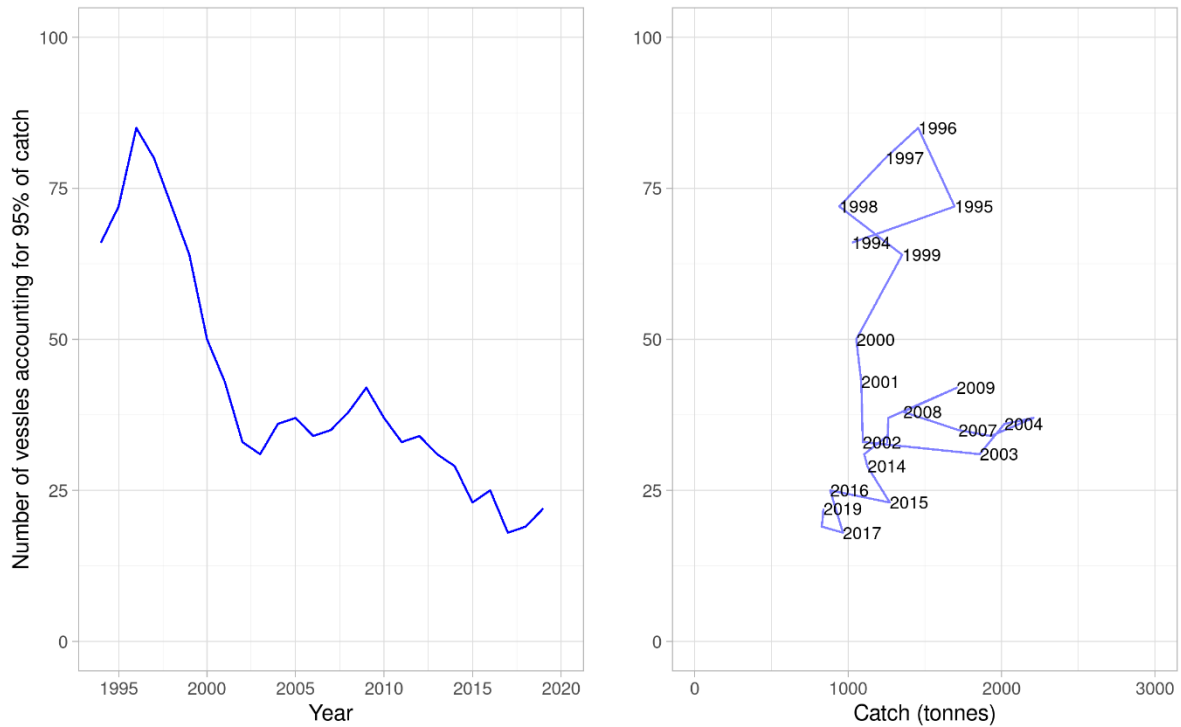


Figure 5. Witch. Number of vessels (all gear types) accounting for 95% of the total catch annually since 1994. Left: Plotted against year. Right: Plotted against total catch. Data from the Directorate of Fisheries.

Mynd 5. Langlúra. Fjöldi skipa og báta (öll veiðarfæri) sem veiddu 95% heildaraflans hvert ár frá 1994. Vinstri: Sýnt eftir árum. Hægri: Sýnt í samanburði við heildarafla. Gögn frá aflaskráningarkerfi Fiskistofu.

CATCH PER UNIT EFFORT (CPUE) AND EFFORT.

CPUE estimates of witch in Icelandic waters are not considered representative of stock abundance as changes in fleet composition, technical improvements and differences in gear setup among other things have not been accounted for when estimating CPUE.

Non-standardised estimates of CPUE in demersal seine (kg/set) is calculated as the total weight in sets in where witch was more than 10% of the catch. CPUE in demersal seine has fluctuated between 200 and 570 kg/set, highest in 2014–2019. CPUE for witch in *Nephrops* trawl (kg/h), in hauls where witch is more than 10% of the catch, has remained relatively stable around 80 kg/hour since 2011 (Figure 6).

Total fishing effort for witch in demersal seine 2000–2019 has since 2005, when it was highest, gradually decreased to the lowest level in 2016 and has remained at that level since then (Figure 6). Effort (number of tows) in *Nephrops* trawl has fluctuated during this same period (Figure 6). These fluctuations are in line with fluctuations in the annual total tows of the *Nephrops* fleet. Witch is a bycatch in the *Nephrops* fishery and reporting was poor early on. Before 2003, less than 50% of witch landings from *Nephrops* trawl were reported in logbooks. Comparison of the length composition of the witch catch in the *Nephrops* survey to the catch from the *Nephrops* trawlers indicated some discarding of the smaller witch in earlier years.

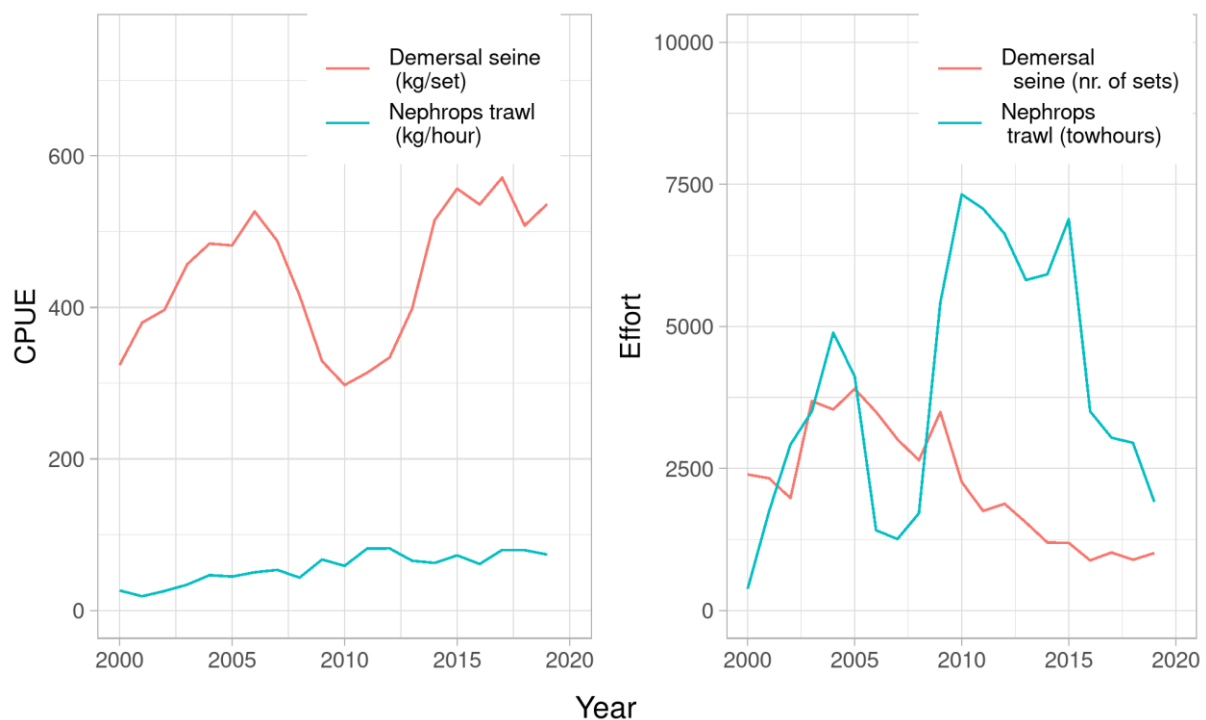


Figure 6. Witch. Non-standardised estimates of CPUE (left) and fishing effort (right) from demersal seine (kg/set or nr. of sets) and *Nephrops* trawl (kg/hour or towhours).

Mynd 6. Langlúra. Afli á sóknareiningu (vinstri) og sókn (hægri) með dragnot (kg í kasti eða fjöldi kasta) og humarvörpu (kg/klst eða togtímar).

AGE DISTRIBUTION OF LANDED WITCH

Table 2 shows otoliths sampling from the commercial witch catch 2010-2019. Analysis done in 2013 by the Marine Research Institute (MRI) suggested that excessive amounts of otoliths were being taken from commercial catches, and as a result the number of witch samples was reduced. Before this change, around 5000 otoliths from 100 samples were collected annually, but since 2014, annual number of samples have been between 29-60 and number of otoliths sampled between 725-1500 (Table 2, Figure 7). In general, over 95% of the otoliths sampled are age read.

Table 2. Witch. Number of samples and aged otoliths from landed catch.

Tafla 2. Langlúra. Fjöldi sýna og aldursgreindra fiska úr lönduðum afla.

Year	Demersal seine		Nephrops trawl		Demersal trawl	
	Samples	Otoliths	Samples	Otoliths	Samples	Otoliths
2010	45	2239	48	2400	7	350
2011	38	1900	56	2800	3	150
2012	46	2300	50	2500	1	50
2013	40	1950	28	1400	3	150
2014	26	650	18	450	3	75
2015	35	875	24	600	1	25
2016	20	500	10	250	3	75
2017	30	750	12	300	5	123
2018	19	475	8	200	4	100
2019	18	450	8	200	3	75

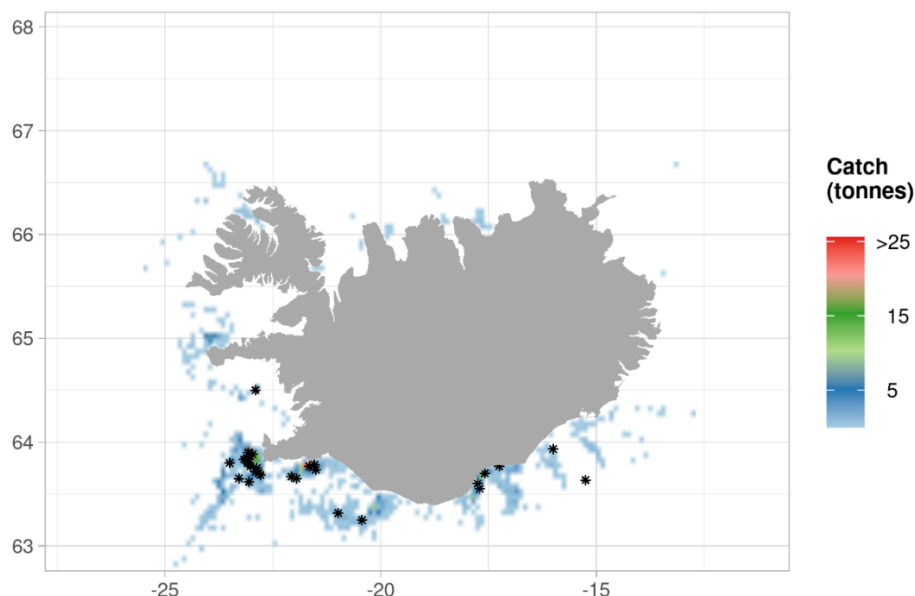


Figure 7. Witch. Fishing grounds in 2019 as reported in logbooks (colours) and positions of samples taken from landings (asterisks).

Mynd 7. Langlúra. Veiðisvæði við Ísland árið 2019 samkvæmt afladagbókum (litir) og staðsetningar sýna úr lönduðum afla (stjörnur).

In 2001-2005, most of the catch was 4-7 years old witch (Figure 8). The proportion of these age classes in the catch has since decreased and 10-year-old fish were most common in the catch over the last two years. Thus, witch in the catch have gradually become older, and there are little signs of recruitment of younger fish into the fishery.

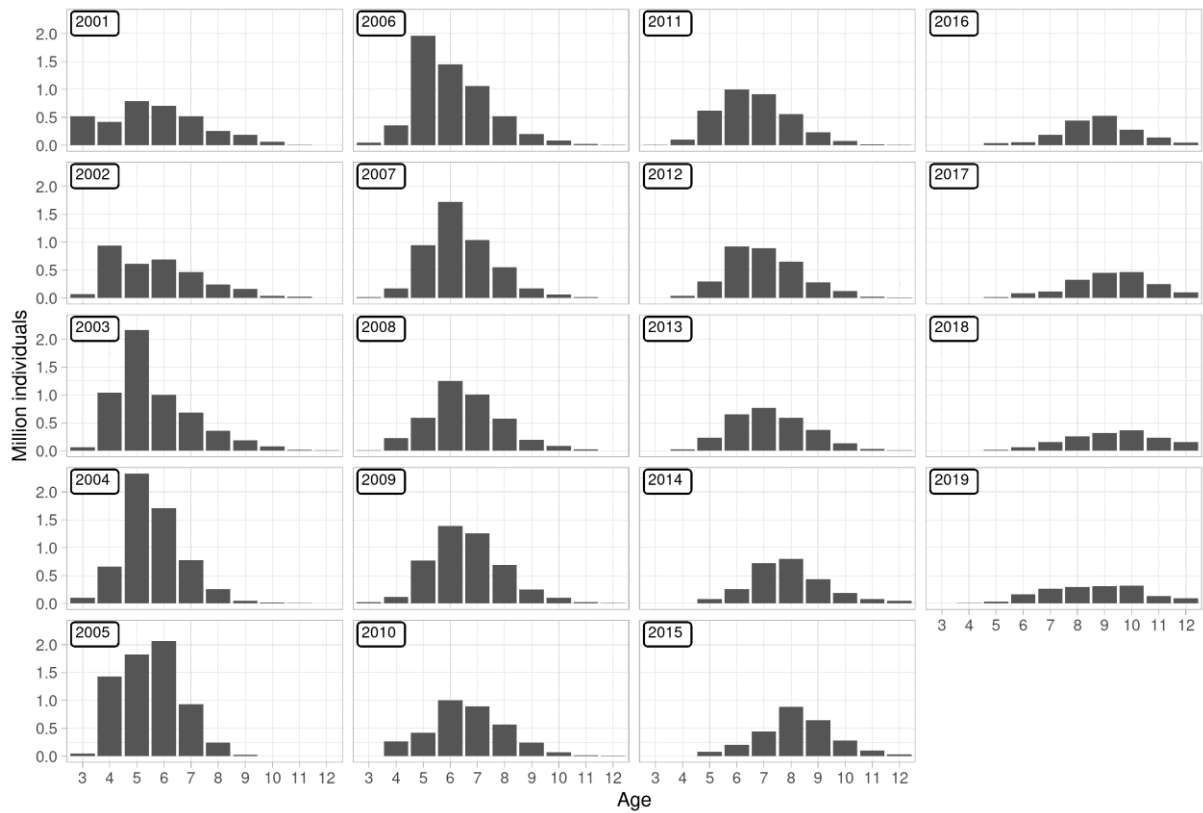


Figure 8. Witch. Estimated age distribution of landed catch based on landings and otoliths collected from landed catch.

Mynd 8. Langlúra. Áætluð aldursdreifing landaðs afla byggð á aldursgreiningum á fiskum úr afla.

LENGTH DISTRIBUTION OF LANDED WITCH

Over the last seven years, there has been a shift towards larger fish in the length distribution of landed catch (Figure 9). As a result, the average length in the samples taken from commercial catch has increased from 36.7 cm in 2002 to 41.9 cm in 2019. Few smaller fish have been seen entering the fishery over the last 5 years.

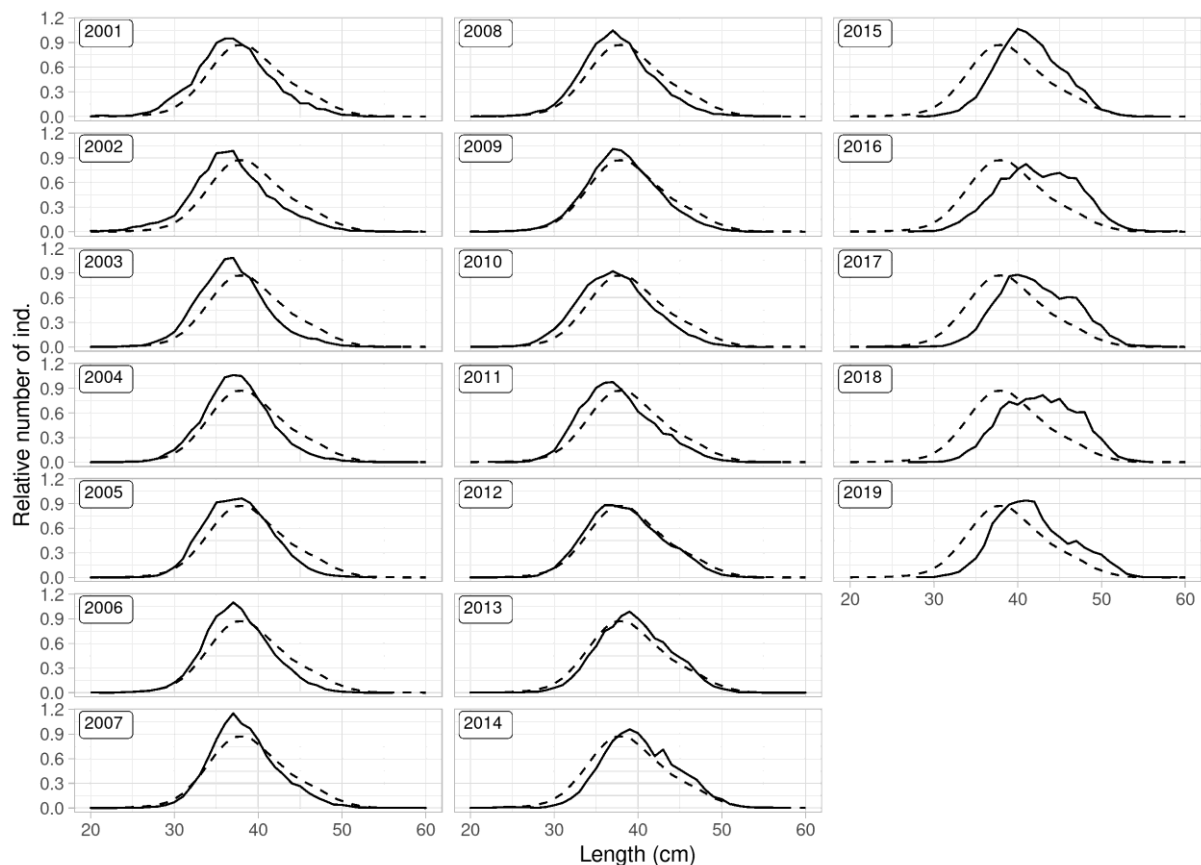


Figure 9. Witch. Length distribution of fish sampled from landed catch since 2001. The dotted line represents the mean length for all years.

Mynd 9. Langlúra. Lengdardreifing aflasýna frá árinu 2001 með meðallengd fyrir öll árin (punktalína).

SURVEY DATA

The Icelandic spring groundfish survey (hereafter spring survey, IS-SMB), which has been conducted annually in March since 1985, covers the most important distribution area of the witch fishery. In addition, the Icelandic autumn groundfish survey (hereafter autumn survey, IS-SMH) was commenced in 1996. The autumn survey was not conducted in 2011.

The spring survey is considered to measure changes in abundance/biomass better than the autumn survey. It does not, however, adequately cover the main recruitment grounds for witch that are poorly known.

Figure 10 shows trends in various biomass indices and a recruitment index based on abundance of witch smaller than 30 cm in the spring and autumn surveys. Survey length disaggregated abundance indices are shown in Figures 11-12, and abundance and changes in spatial distribution in Figures 13-16.

In both surveys, total biomass indices and biomass indices for witch larger than 30 cm (harvestable part of the stock) increased rapidly in 2004 (Figure 10) and have remained relatively high with some decline in biomass in the spring survey in 2020. Biomass of large fish (43 cm and larger) increased rapidly from 2010-2015, but has decreased in the last two years in the spring survey. Recruitment indices (numbers below 20 cm) has decreased over the time period but small recruitment pulses have been observed. Since 2011, the recruitment indices from both surveys are at an all-time low.

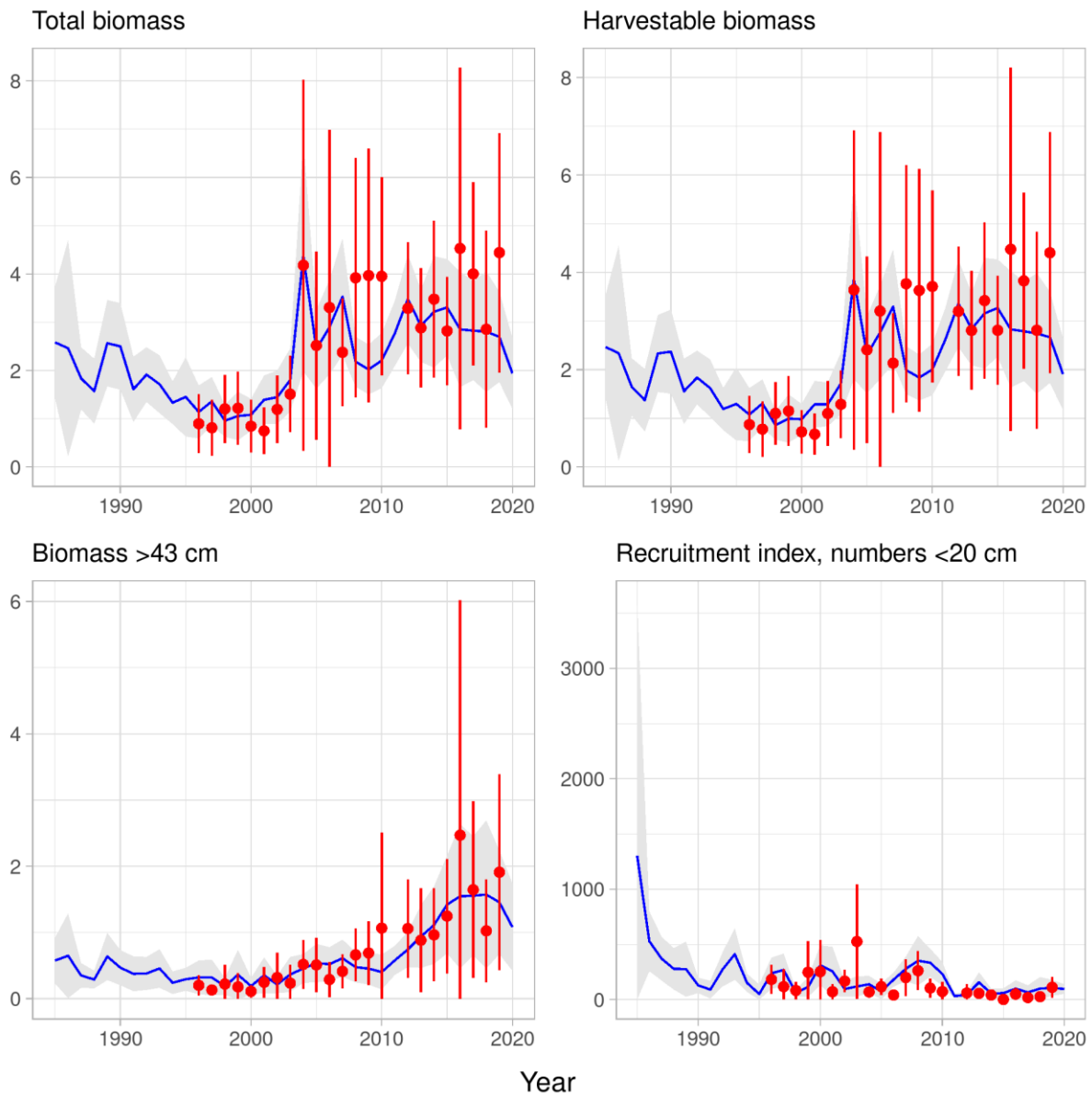


Figure 10. Witch. Total biomass indices (upper left), harvestable biomass indices (≥ 30 cm, upper, right) and biomass index of larger individuals (≥ 43 cm, lower left), juvenile abundance indices (≤ 20 cm, lower right), from the spring survey (blue) and autumn survey (red), along with the standard deviation.

Mynd 10. Langlúra. Stofnvísitala (efri til vinstri), vísitala veiðistofns (≥ 30 cm, efri til hægri), vísitala stærri einstaklinga (≥ 43 cm, neðri til vinstri) og nýliðunarvísitala (≤ 20 cm, neðri til hægri) úr stofnmælingu botnfiska að vori (blátt) og hausti (rautt), ásamt staðalfrávik.

Length distribution of witch in the spring survey has shifted towards larger fish (Figure 11). The average length of witch increased from 33 cm in 2009 to 40 cm in 2020. Data from the autumn survey tells a similar story, with a marked increase in average size of witch (Figure 12).

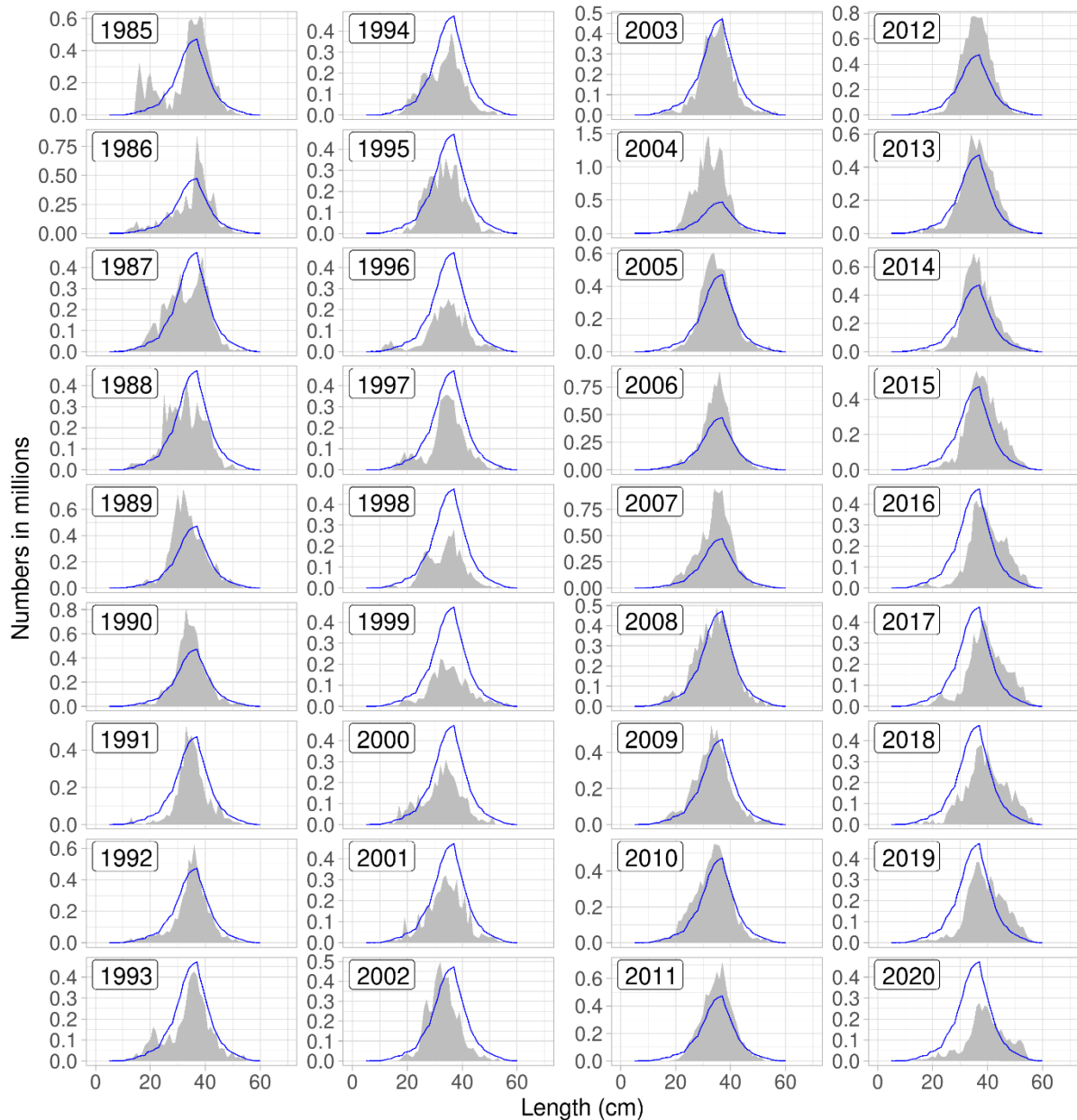


Figure 11. Witch. Length disaggregated abundance indices from the spring survey. The blue line shows the mean for all years. Note different scales on y-axes.

Mynd 11. Langlúra. Lengdarskiptar vísitölur úr stofnmælingu botnfiska að vori frá 1985 ásamt meðaltali allra ára (blá lína). Athugið mismunandi skala á y-ásum.

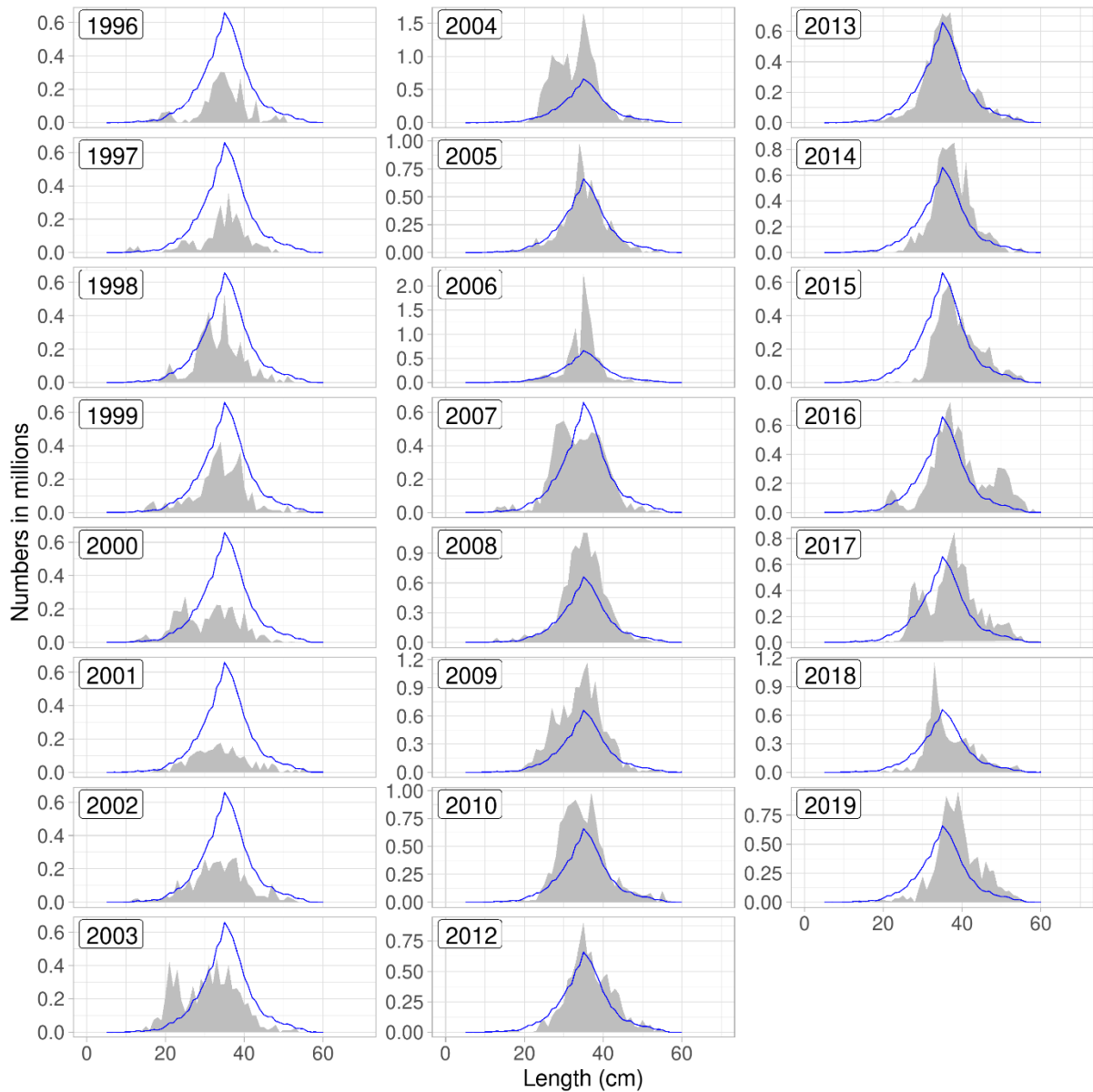


Figure 12. Witch. Length disaggregated abundance indices from the autumn survey. The blue line shows the mean for all years. Note different scales on y-axes.

Mynd 12. Langlúra. Lengdarskiptar vísitölur úr stofnmælingu botnfiska að hausti frá 1996 ásamt meðaltali allra ára (blá lína). Athugið mismunandi skala á y-ásum.

Witch is caught all around Iceland in the spring survey, but only in very small quantities off the east coast (Figures 13-14). Abundance of witch is highest and particularly stable in the SW and W areas. However, in 2002-2012 abundance in the SE area has increased considerably, but then decreased to similar previous levels. Abundance in the northern areas increased in 2008 and remained stable since. The autumn survey shows a similar trend (Figures 15-16).

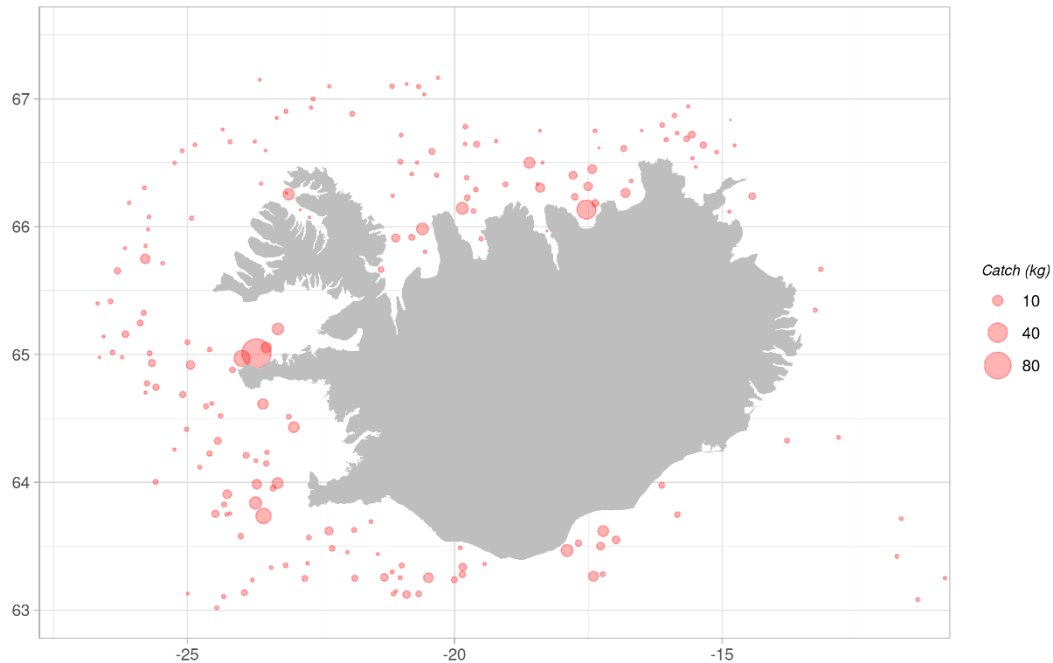


Figure 13. Witch. Spatial distribution in the spring survey in 2020.

Mynd 13. Langlúra. Útbreiðsla í stofnmælingu botnfiska að vori 2020.

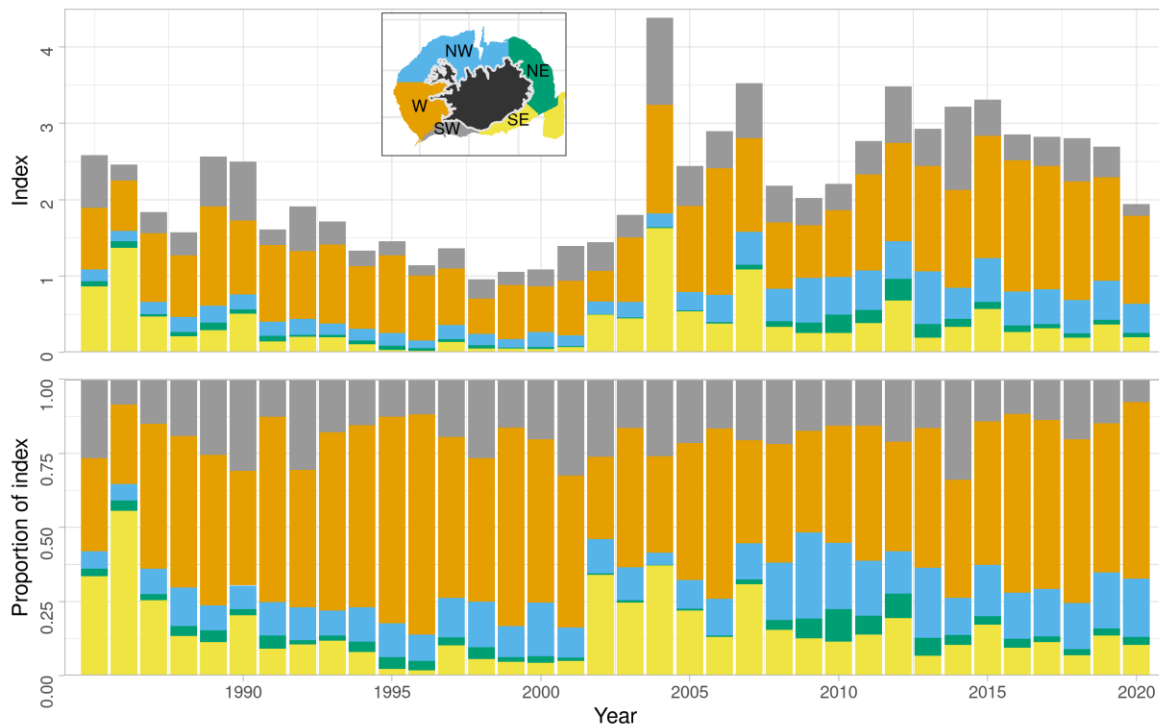


Figure 14. Witch. Spatial distribution of biomass index from the spring survey since 1985.

Mynd 14. Langlúra. Dreifing lífmassavísitölu í stofnmælingu botnfiska að vori, frá árinu 1985.

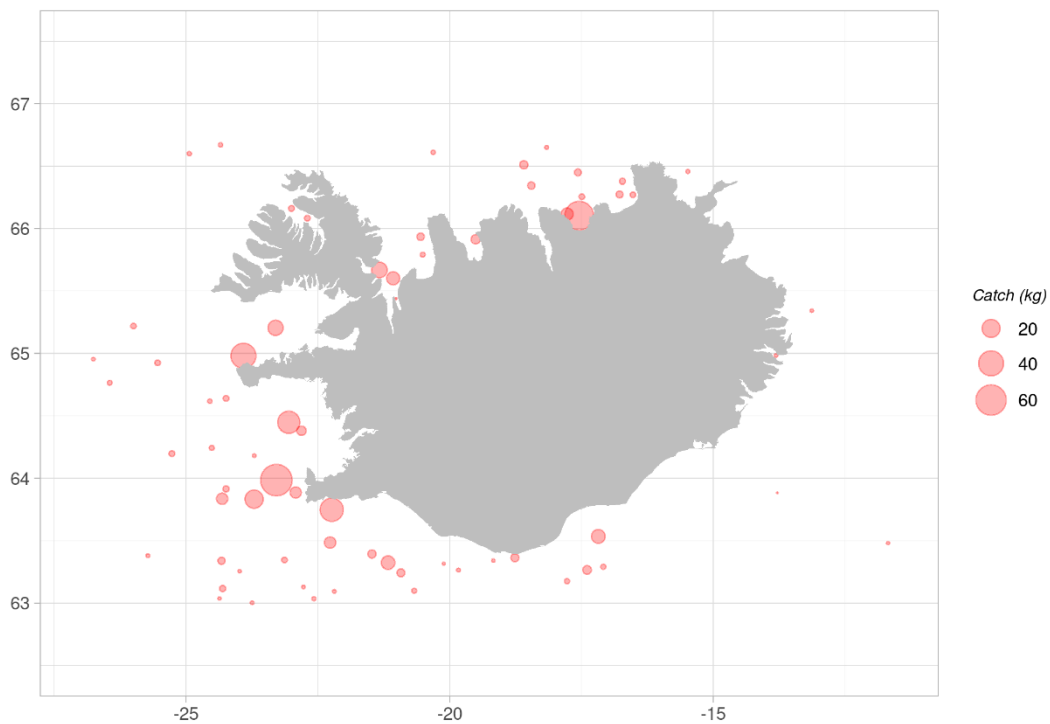


Figure 15. Witch. Spatial distribution in the autumn survey in 2019.

Mynd 15. Langlúra. Útbreiðsla í stofnmælingu botnfiska að hausti árið 2019.

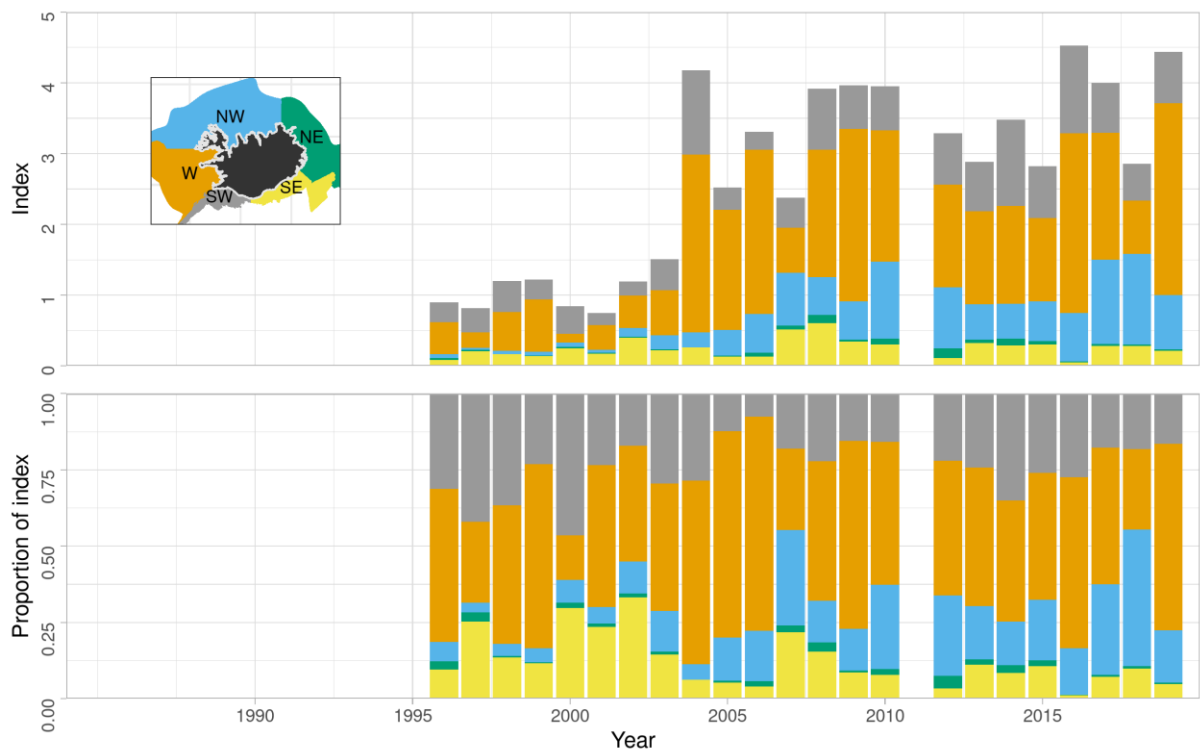


Figure 16. Witch. Spatial distribution of biomass index from the autumn survey.

Mynd 16. Langlúra. Dreifing lífmassavísitölu í stofnmælingu botnfiska að hausti.

MANAGEMENT

The Ministry of Industries and Innovation is responsible for management of the Icelandic fisheries and implementation of legislation. Witch was included in the ITQ system in the 1996/1997 fishing year and as such subjected to TAC limitations. For the fishing years 2005/2006 to 2009/2010 the TAC was set higher than recommended by Marine Research Institute (MRI), but since the 2010/2011 fishing year TAC has been the same as recommended TAC (Table 3).

For most fishing years the net transfers between witch and other species in the Icelandic ITQ-system are less than 10% of the national TAC (Figure 17). The main exception from this was during the fishing years 2008/2009 and 2009/2010 when the national TAC was set considerably higher than recommended, and considerable proportion of witch quota was transferred to other species (Figure 17, Table 3). For the last two fishing years there has been a net transfer from witch to other species in the quota system. Transfer of witch quota between fishing years is usually within 10% (Figure 17).

Table 3. Witch. Recommended TAC, national TAC set by the Ministry, and landings (tonnes).

Tafla 3. Langlúra. Tillögur Hafrannsóknastofnunar um hámarksafla, ákvörðun stjórnvalda um aflamark og landaður afli (tonn).

FISHING YEAR	REC. TAC	NATIONAL TAC	CATCH
1994/95	1500	-	1760
1995/96	1400	-	1660
1996/97	1200	1200	1260
1997/98	1100	1100	960
1998/99	1100	1100	1160
1999/00	1100	1100	1110
2000/01	1100	1100	1160
2001/02	1350	1350	1220
2002/03	1500	1500	1530
2003/04	1500	1500	2000
2004/05	2000	2000	2250
2005/06	2200	2400	2190
2006/07	2000	2400	2200
2007/08	2000	2400	1540
2008/09	1600	2200	1700
2009/10	1600	2200	1300
2010/11	1300	1300	1220
2011/12	1100	1300	1450
2012/13	1100	1100	1180
2013/14	1100	1100	1170
2014/15	1100	1100	1220
2015/16	1100	1100	1140
2016/17	1110	1100	1090
2017/18	1116	1116	885
2018/19	1100	1100	844
2019/20	1067	1067	
2020/21	854		

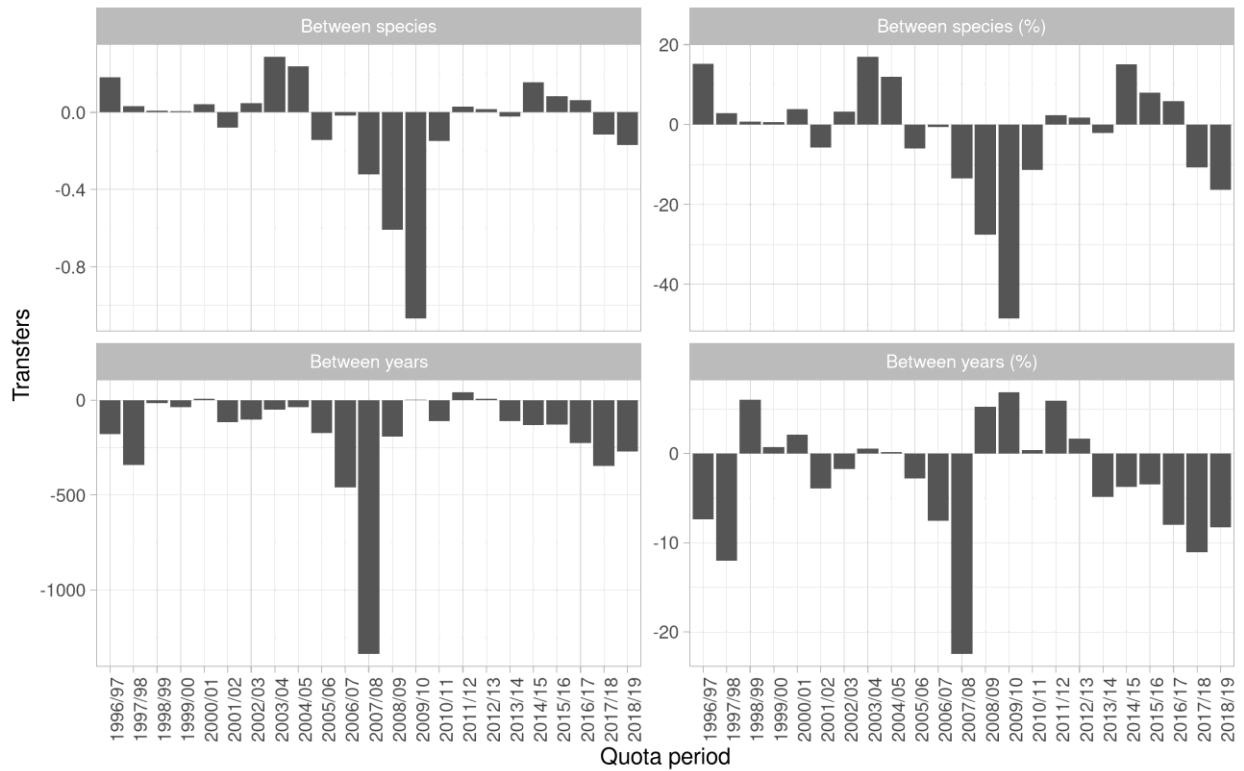


Figure 17. Witch. Net transfers of quota to and from witch in the Icelandic ITQ system by fishing year. Between species (upper): Positive values indicate a transfer of other species to witch, but negative values indicate a transfer of witch quota to other species. Between years (lower): Net transfer of quota in a given fishing year.

Mynd 17. Langlúra. Nettó tilfærsla á kvóta eftir fiskveiðiárum. Tilfærsla milli tegunda (efri myndir): Jákvæð gildi tákna tilfærslu á kvóta annarra tegunda yfir á langlúru en neikvæð gildi tilfærslu langlúrukvóta á aðrar tegundir. Tilfærsla milli ára (neðri myndir): Nettó tilfærsla kvóta á viðkomandi fiskveiðiári.