

# SPOTTED WOLFFISH – HLÝRI

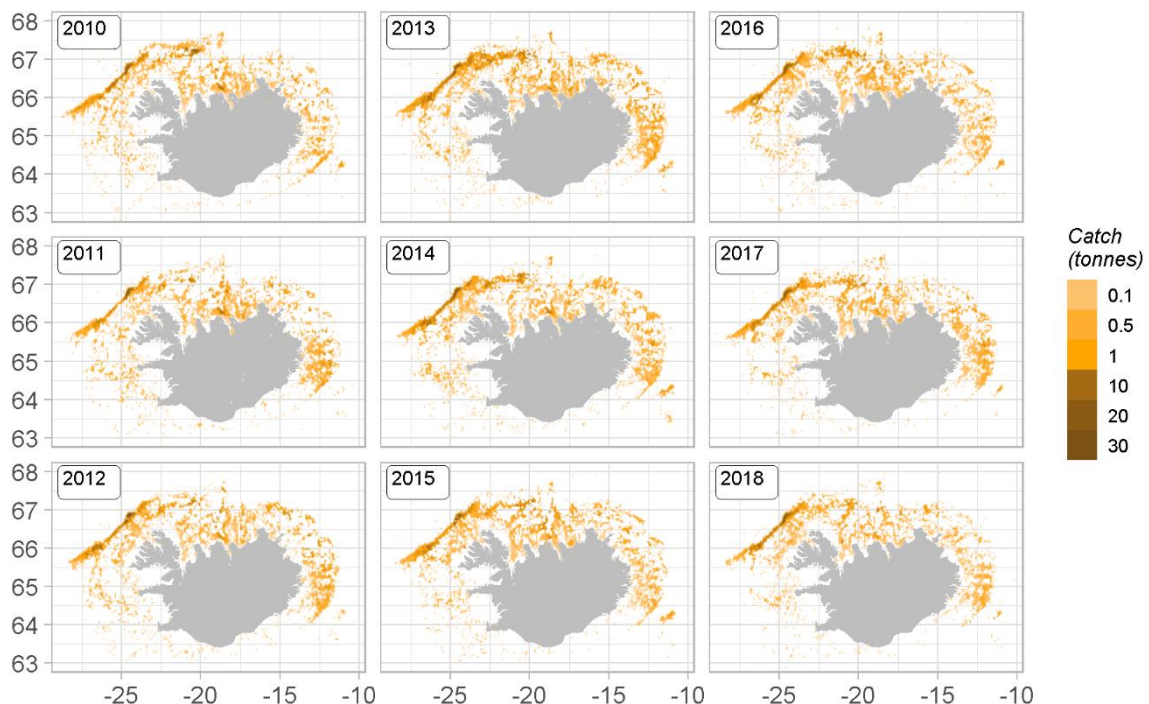
## *Anarhichas minor*

### GENERAL INFORMATION

Spotted wolffish has been exploited for many years in Icelandic waters. It is an oblong fish with characteristic dark spots in its skin and sharp, protruding teeth. In catches, a common length range is 60-90 cm, but the largest spotted wolffish caught around Iceland was 144 cm. Spotted wolffish is mainly found at the northwest and north parts of the continental shelf of Iceland, at sandy or muddy substrate and depths of 100-400 meters. In Icelandic waters, female spotted wolffish mature at the average of 83 cm and 9 years old. Before maturity, annual growth is on the average 6.5 cm annually.

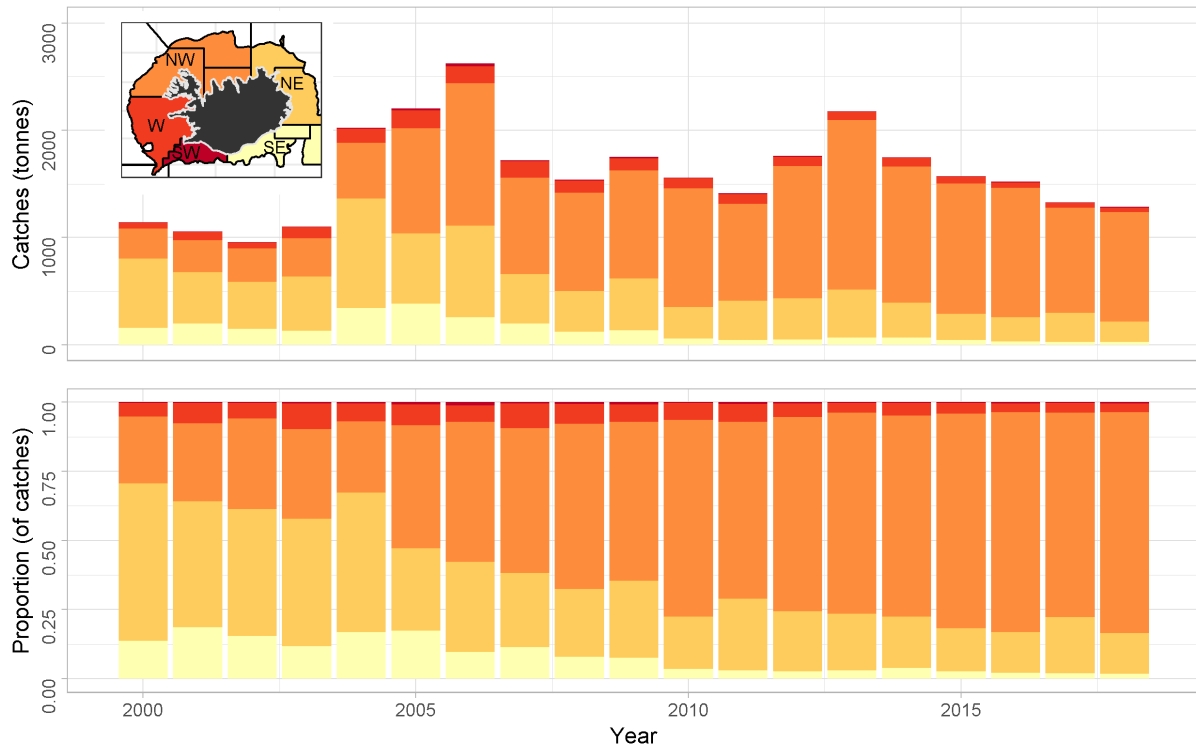
### THE FISHERY

The main fishing grounds for spotted wolffish are in the northwest of Iceland. The proportion of the catch in the NW area has been increasing since 2000 and approximately 75% of the last years catch was in those waters. At the same time the proportion of the catch has been decreasing in the NE area, from around 50% in 2000 to around 20% in 2018 (Figure 1 and 2).



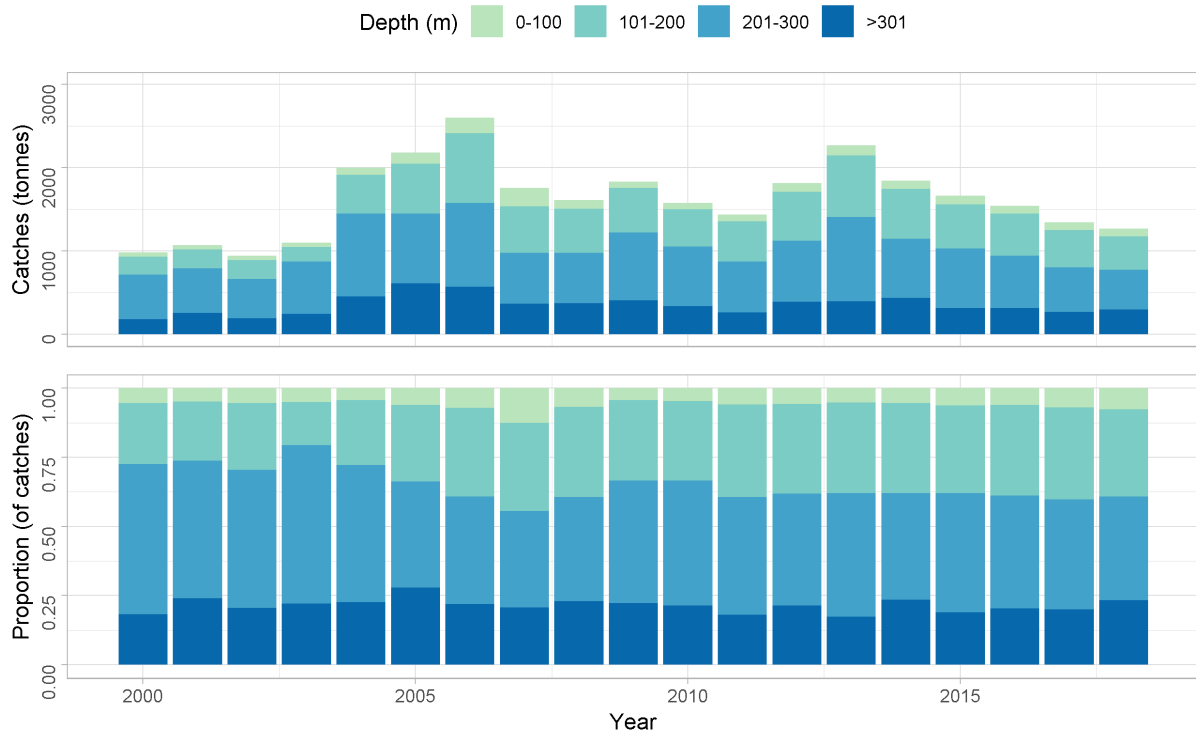
**Figure 1. Spotted wolffish. Geographical distribution of the Icelandic fishery since 2010. Reported catch from logbooks.**

*Mynd 1. Hlýri. Útbreiðsla veiða á Íslandsmiðum frá 2010 samkvæmt afladagbókum.*



**Figure 2. Spotted wolffish. Spatial distribution of the Icelandic fishery by fishing areas from year 2000 according to logbooks. All gears combined.**

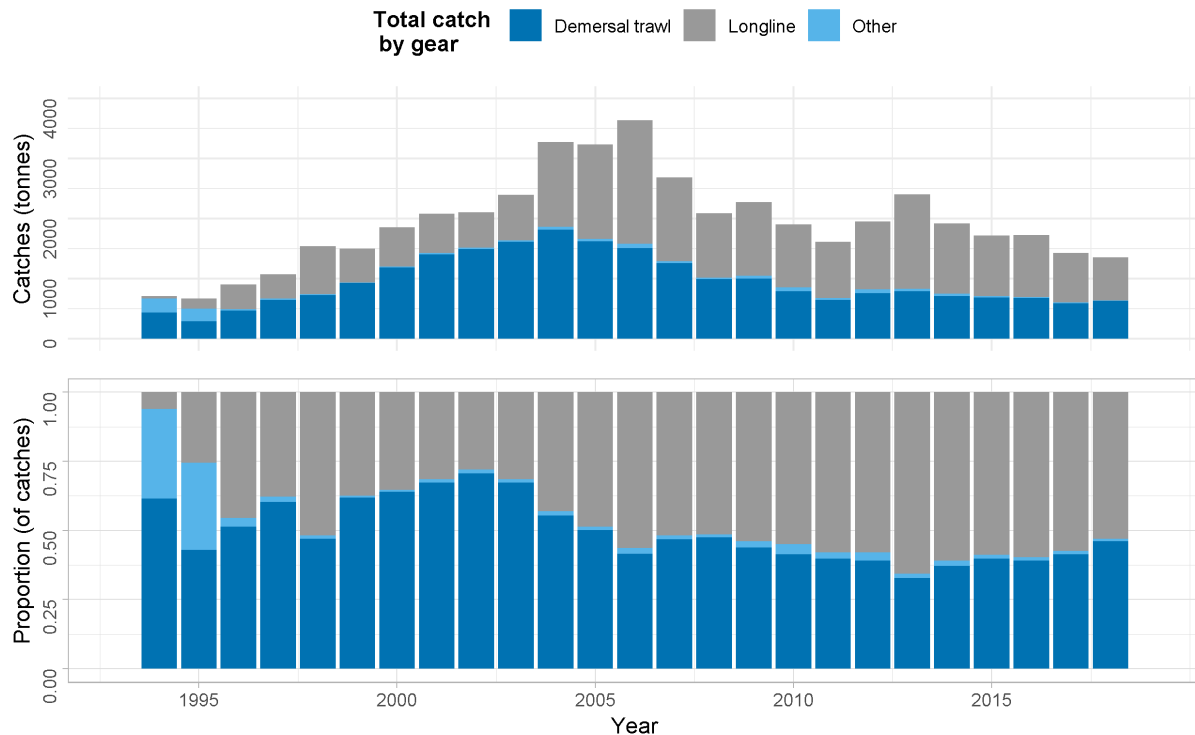
*Mynd 2. Hlýri. Útbreiðsla veiða við Ísland frá árinu 2000 samkvæmt afladagbókum. Öll veiðarfæri samanlagt.*



**Figure 3. Spotted wolffish. Depth distribution of longline and demersal trawl catches according to logbooks.**

*Mynd 3. Hlýri. Afli á línu og í botnvörpu skipt eftir dýpi, samkvæmt afladagbókum.*

About 6% of the catch of spotted wolffish is caught at depths less than 100 m, and about 20-30% between 100 and 200 m (Figure 3). In 2000-2004 about 50% of the catch of spotted wolffish was caught at depths between 200 and 300 m, decreasing to about 40% in 2018. The proportion of the catch taken at more than 300 m has been relatively stable at around 20% since 2000 (Figure 3).



**Figure 4. Spotted wolffish. Total catch (landings) by fishing gear since 1994, according to statistics from the Directorate of Fisheries.**

*Mynd 4. Hlýri. Landaður afli eftir veiðarfærum frá 1994, samkvæmt aflaskráningarkerfi Fiskistofu.*

Around 98% of landed spotted wolffish is caught on longline and in demersal trawl. In 2000-2003, the longline catch was less than 40% of the total catch, and in demersal trawl little more than 60%. From 2002, the catch on longline has been increasing relative to that taken in demersal trawl. In 2018, longline catch was around 53% of the total catch (Figure 4).

In 2000-2006, the number of longliners reporting catches of 1000 kg/year or more of spotted wolffish increased from 24 to 87 (Table 1). At the same time catches on longline increased from 700 to 2000 tonnes. Since then, the number of longliners reporting spotted wolffish catches decreased to around 60 vessels from 2008-2018, with an annual longline catch of around 1100 tonnes on average. The number of trawlers was 40-60 vessels in 2000-2018 with no trend observed. However, catches in demersal trawl from 2008 have been only about half of what they were in 2000-2007 (Table 1).

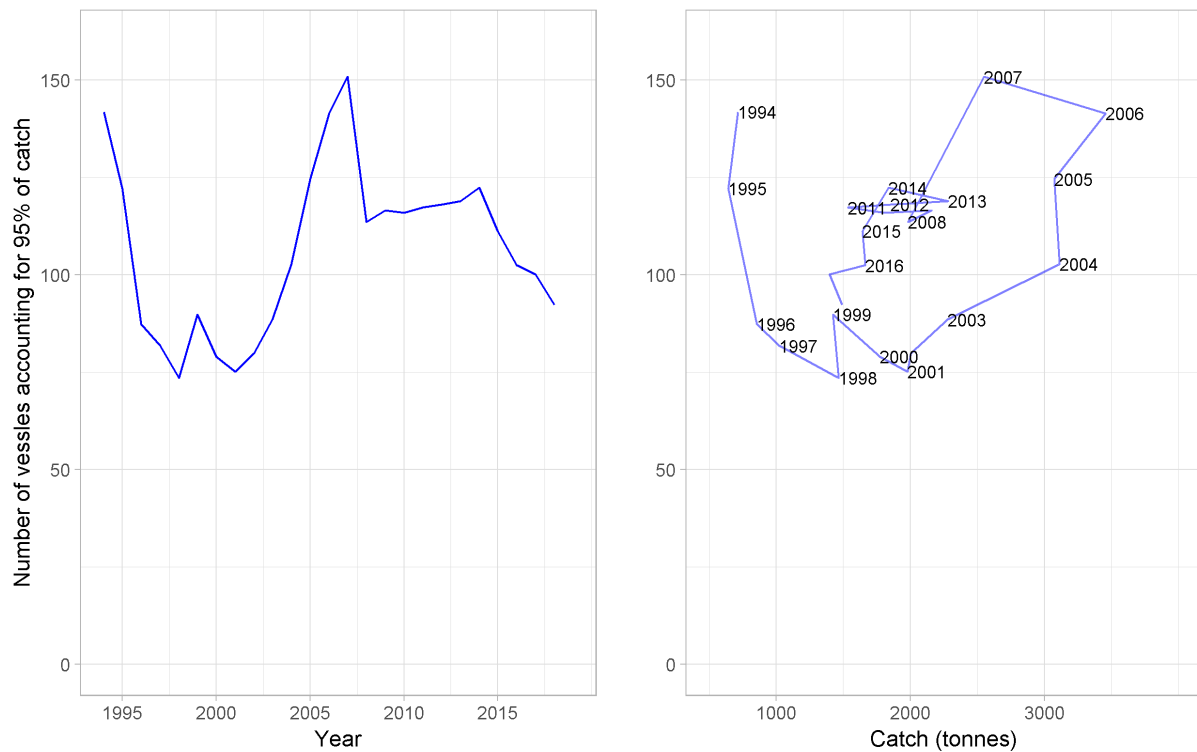
The increased targeting of longliners began in 1996 with a catch over 400 tonnes, but before that it was usually less than 100 tonnes annually. This increased effort could be related to the fact that in the fishing year 1996/97 its closely related species, Atlantic wolffish, was for the first time included in ITQ system.

**Table 1. Spotted wolffish. Number of Icelandic vessels reporting catch of 1000 kg/year or more, and all landed catch divided by gear type according to statistics from the Directorate of Fisheries.**

*Tafla 1. Hlýri. Fjöldi íslenskra skipa sem veitt hefur 1000 kg eða meira af hlýra yfir árið og allur landaður aflí eftir veiðarfærum, samkvæmt aflaskráningarkerfi Fiskistofu.*

YEAR	NUMBER OF VESSELS			CATCHES (TONNES)			
	Longline	Trawlers	Other	Longline	Demersal trawl	Other	Sum
2000	24	39	2	693	1149	10	1852
2001	32	42	0	673	1399	15	2087
2002	29	42	2	610	1463	35	2108
2003	29	41	3	748	1618	58	2424
2004	53	53	1	1409	1813	59	3281
2005	71	45	3	1571	1631	48	3250
2006	87	51	3	2041	1565	35	3641
2007	84	44	1	1391	1258	38	2687
2008	60	50	2	1069	990	25	2084
2009	63	55	8	1243	1000	49	2292
2010	56	54	8	1042	808	51	1901
2011	63	49	6	934	642	38	1614
2012	63	56	5	1124	761	38	1923
2013	77	61	8	1575	788	35	2398
2014	72	55	6	1180	714	34	1928
2015	67	50	7	1005	740	29	1774
2016	56	49	8	1031	727	17	1775
2017	59	54	4	818	589	18	1424
2018	62	50	2	718	625	10	1353

The number of vessels accounting for 95% of the annual catch of spotted wolffish has been in the range of 75-150 vessels (Figure 5). The number of vessels was relatively stable in 1996-2003, despite increased catches, but increased in 2004-2006 when annual catches exceeded 3000 tonnes. Since 2007, a drop in the number of vessels accounting for 95% of the catches has coincided with catch reductions (Figure 5).



**Figure 5. Spotted wolffish. Number of vessels (all gear types) accounting for 95% of the total catch annually since 1994. Left: Plotted against year. Right: Plotted against total catch. Data from the Directorate of Fisheries.**

**Mynd 5. Hlýri. Fjöldi skipa og báta (öllum veiðarfærum) sem veiddu 95% heildaraflans hvert ár frá 1994. Vinstri: Sýnt eftir árum. Hægri: Sýnt í samanburði við heildarafla. Gögn frá aflaskráningarkerfi Fiskistofu.**

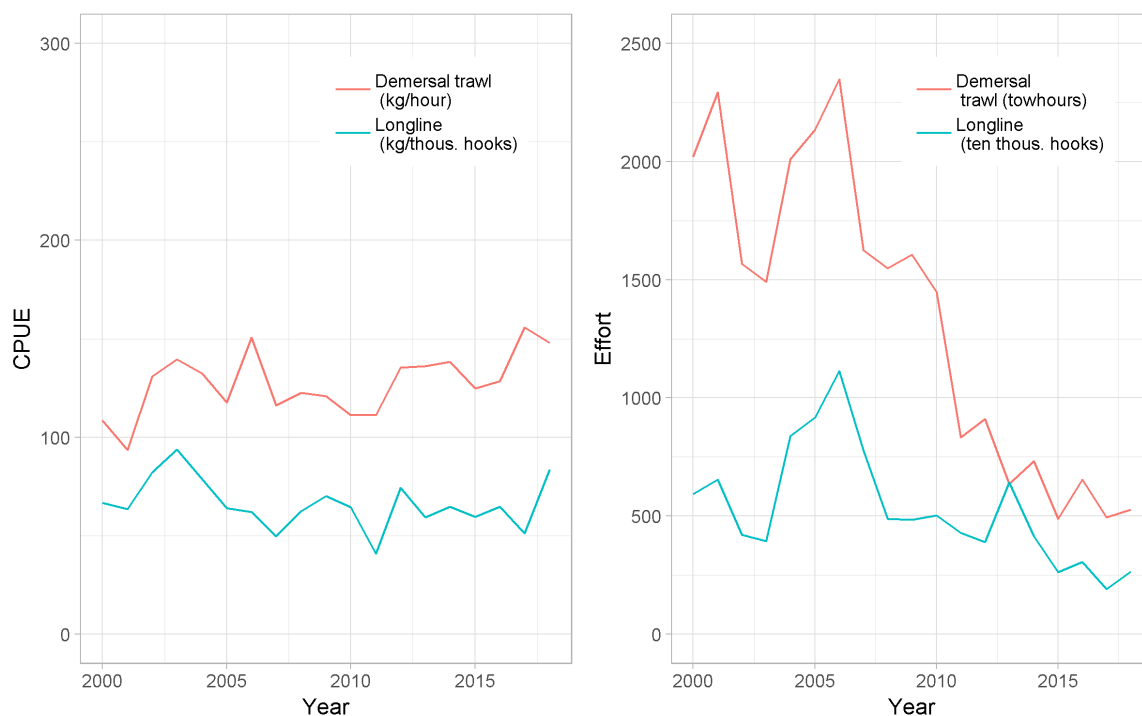
## CATCH PER UNIT EFFORT (CPUE) AND EFFORT.

CPUE estimates of spotted wolffish in Icelandic waters are not considered representative of stock abundance, as changes in fleet composition, technical improvements and differences in gear setup among other things have not been accounted for when estimating CPUE.

None-standardised estimates of CPUE of longline (kg/1000 hooks), and demersal trawl (kg/tow-hour), was calculated as the total weight in sets or tows in which spotted wolffish was more than 10% of the catch, according to logbooks. Similarly, effort of demersal trawl was the number of tow-hours and for longline number of hooks, in both cases data in which spotted wolffish was more than 10% of the catch.

The estimated longline CPUE has no clear trend; it was highest in 2003 (94 kg/1000 hooks) and lowest in 2011 (41 kg/1000 hooks). Estimates of CPUE from demersal trawl fluctuated between 93 and 150 kg/h in 2000-2010 with no clear trend. From 2011 (111 kg/h) to 2018 (148 kg/h) CPUE has generally been increasing (Figure 6).

Longline effort increased from 6 million hooks in 2000 to around 11 million hooks in 2006, but since then it has been decreasing and was around 2.6 million hooks in 2018. Fishing effort of demersal trawl was in the range of 1500-2350 tow-hours in 2000-2006. Since 2006 the effort has been decreasing and was around 500 tow-hours in 2018 (Figure 6).



**Figure 6. Spotted wolffish. Non-standardised estimates of CPUE (left) from demersal trawl (kg/h, red) and longline (kg/1000 hooks, blue). Fishing effort (right) for demersal trawl (tows hours, red) and longline (10000 hooks, blue).**

*Mynd 6. Hlýri. Afli á sóknareiningu (vinstri) í botnvörpu (kg/togtími, rautt) og línu (kg/1000 krókar, blátt). Sókn (hægri) í botnvörpu (togtímar, rautt) og á línu (10000 krókar, blátt).*

## AGE DISTRIBUTION OF LANDED SPOTTED WOLFFISH

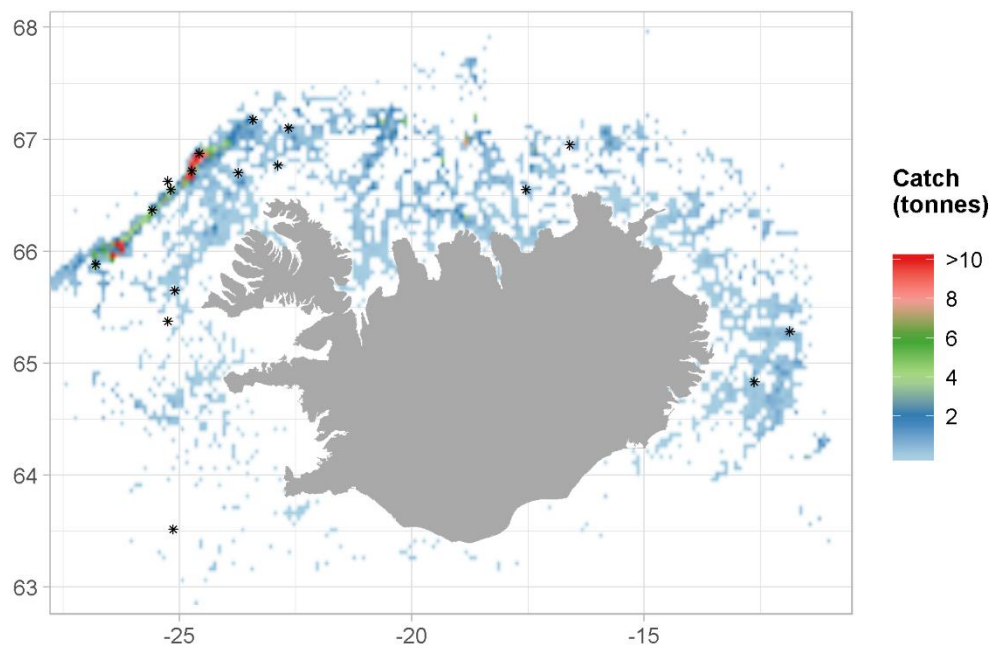
Around 400-1900 otoliths were sampled annually by the MRI, and in the last nine years 7-45 samples from longliners and 4-29 samples from demersal trawl were collected (Table 2, Figure 7). Samples were not taken from other gear, as they represent a very small proportion (~2%) of the total catch.

In 2015 and 2016 about 400 specimens was age all from samples from commercial catches in 2015. However, from then none have been aged. The estimated age range was between 5-16 years, age 8 and 9 years were most common or about 40%. The mean age was 9 years.

**Table 2. Spotted wolffish. Number of samples and otoliths sampled from landed catch.**

*Tafla 2. Hlýri. Fjöldi sýna og kvarnaðra fiska úr lönduðum afla.*

Year	Longline		Demersal trawl	
	Samples	Otoliths	Samples	Otoliths
2010	7	295	8	355
2011	7	329	5	246
2012	9	432	10	451
2013	16	789	4	200
2014	45	1101	29	775
2015	19	475	20	500
2016	14	350	12	300
2017	8	200	9	225
2018	8	200	9	225

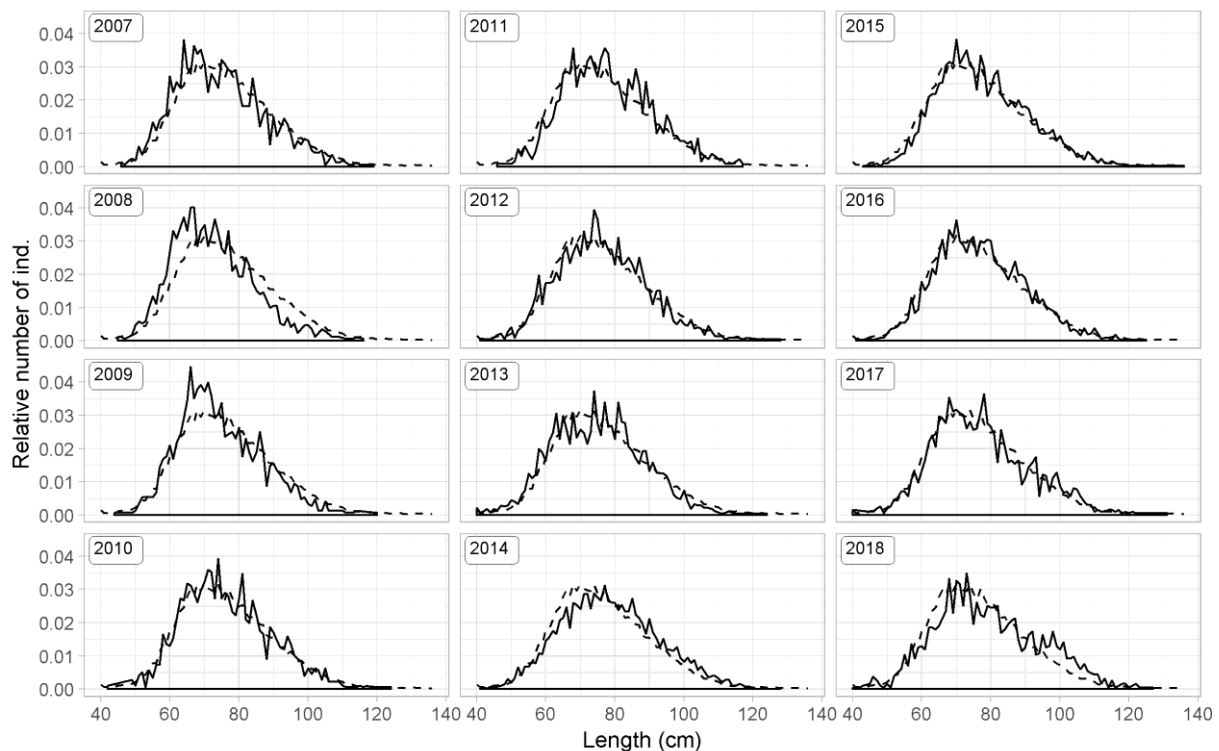


**Figure 7. Spotted wolffish. Fishing grounds in 2018 as reported in logbooks and positions of samples taken from landings (asterisks).**

*Mynd 7. Hlýri. Veidisvæði við Ísland árið 2018 samkvæmt afladagbókum og staðsetningar sýna úr lönduðum afla (stjörnur).*

## LENGTH DISTRIBUTION OF LANDED SPOTTED WOLFFISH

The mean length of spotted wolffish sampled from commercial catches has generally been increasing from 2008 (72.3 cm) to 2018 (79.2 cm) (Figure 8).



**Figure 8. Spotted wolffish. Relative length distribution of spotted wolffish sampled from landed catch. The dotted line represents the mean length distribution for all years.**

**Mynd 8. Hlýri. Hlutfallsleg lengdardreifing úr aflasýnum frá árinu 2007 ásamt meðal lengdardreifingu fyrir öll árin (punktalína).**

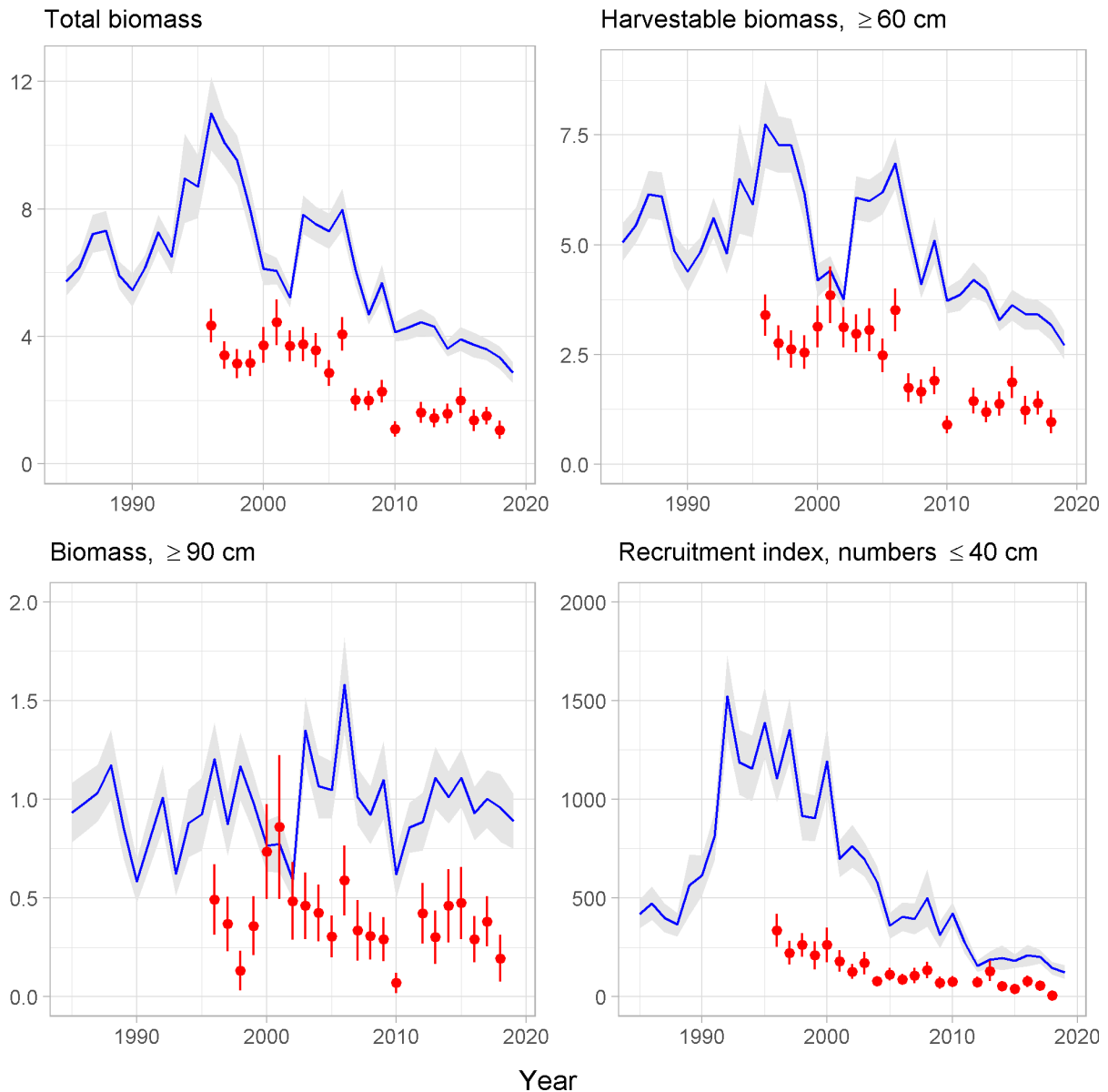
## SURVEY DATA

The Icelandic spring groundfish survey (hereafter spring survey, IS-SMB), which has been conducted annually in March since 1985, covers the most important distribution area of the spotted wolffish fishery. In addition, the Icelandic autumn groundfish survey (hereafter autumn survey, IS-SMH) was commenced in 1996 and expanded in 2000. However, a full autumn survey was not conducted in 2011 due to a labour dispute. For spotted wolffish, the spring survey is considered to measure changes in abundance/biomass better than the autumn survey.

Indices of total biomass and harvestable biomass have been decreasing since 1996, except in the years 2003-2006, and are now at a historical low level (Figure 9).

The recruitment index was high in the years 1992-2000. Since then it decreased almost every year to a historically low level in 2012, wherefrom it has been similar.

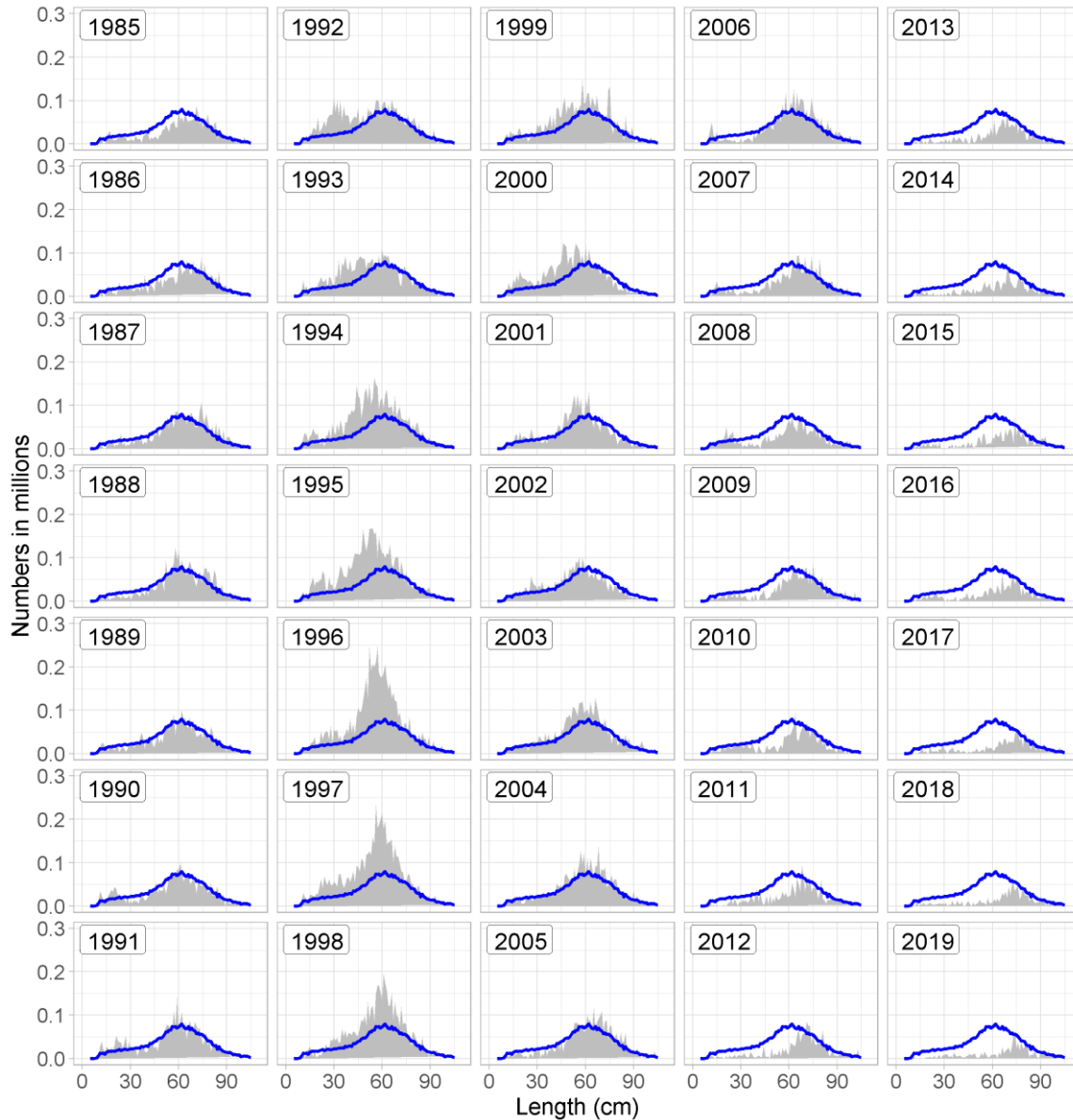




**Figure 9. Spotted wolffish. Total biomass indices (upper left) and harvestable biomass indices ( $\geq 60$  cm, upper, right), large fish biomass indices ( $\geq 90$  cm, lower left) and juvenile abundance indices ( $\leq 40$  cm, lower right) from the spring survey (blue) from 1985 and autumn survey (red) from 1996, along with the standard deviation.**

*Mynd 9. Hlýri. Stofnvísitala (efri til vinstri), vísitala veiðistofns ( $\geq 60$  cm, efri til hægri) og vísitala stærri fiska ( $\geq 90$  cm, neðri til vinstri) og nýliðunarvísitala ( $\leq 40$  cm, neðri til hægri), úr stofnmælingu botnfiska að vori (blátt) frá árinu 1985 og hausti (rautt) frá árinu 1996, ásamt staðalfrávik.*

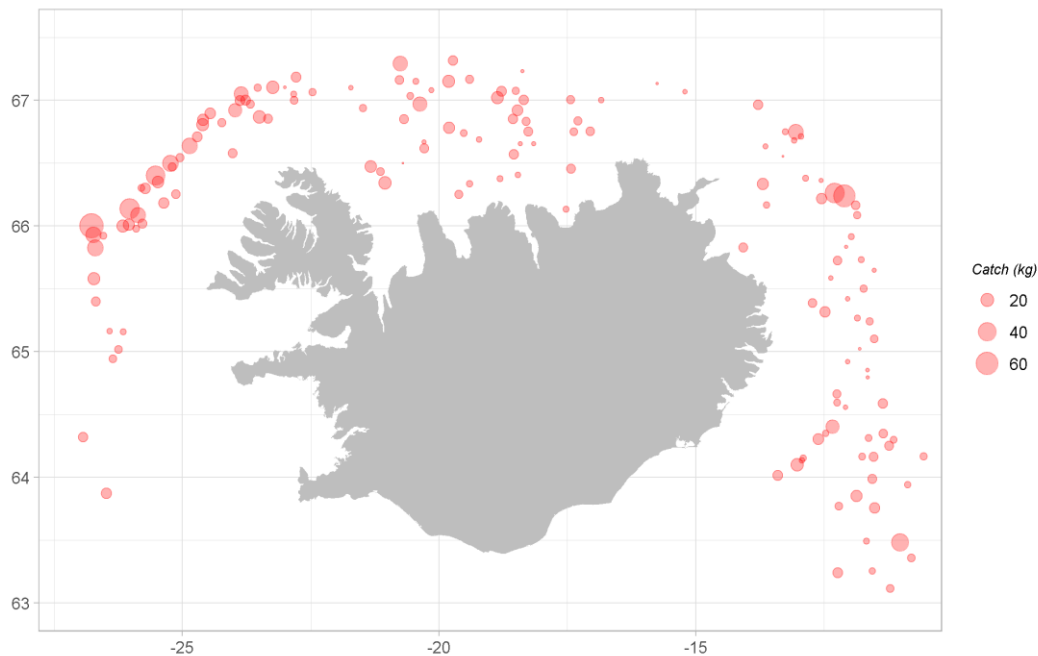
The mean length in spring survey decreased from 1986 (62.9 cm) to 1995 (52.1 cm) due to increased abundance of smaller fish (<60 cm) (Figure 10). Thereafter, the mean length has been increasing, to 69.4 cm in 2019, due to lower abundance of fish smaller than 60 cm. The number of spotted wolffish caught in the spring survey increased from 1273 fish in 1990 to 2744 fish in 1997. Since then the number has been declining and reached the lowest level in 2019 or 378 fish.



**Figure 10. Spotted wolffish. Length disaggregated abundance indices from the spring survey. The blue line shows the mean for all years.**

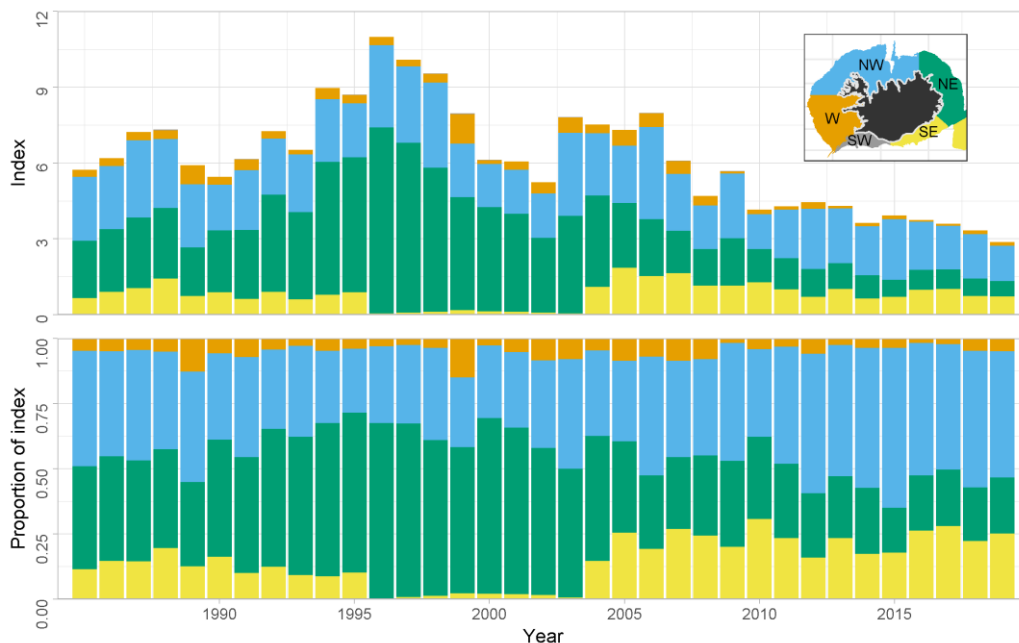
*Mynd 10. Hlýri. Lengdarskiptar vísitölur úr stofnmælingu botnfiska að vori ásamt meðaltali allra ára (blá lína).*

Since 2012, spotted wolffish has mostly been caught in the slope areas northwest and north of Iceland in the spring survey (Figure 11 and 12). Biomass indices from the NW area have relatively stable throughout the survey period. Greater changes have taken place in the NE area, where biomass increased in 1985-1996 but have decreased significantly since then (Figure 12). In 1996-2003 the Iceland-Faroe ridge was not sampled in the spring survey, which seem to have resulted in 15-20% underestimation of the total biomass index for spotted wolffish.



**Figure 11. Spotted wolffish. Spatial distribution in the spring survey in 2019**

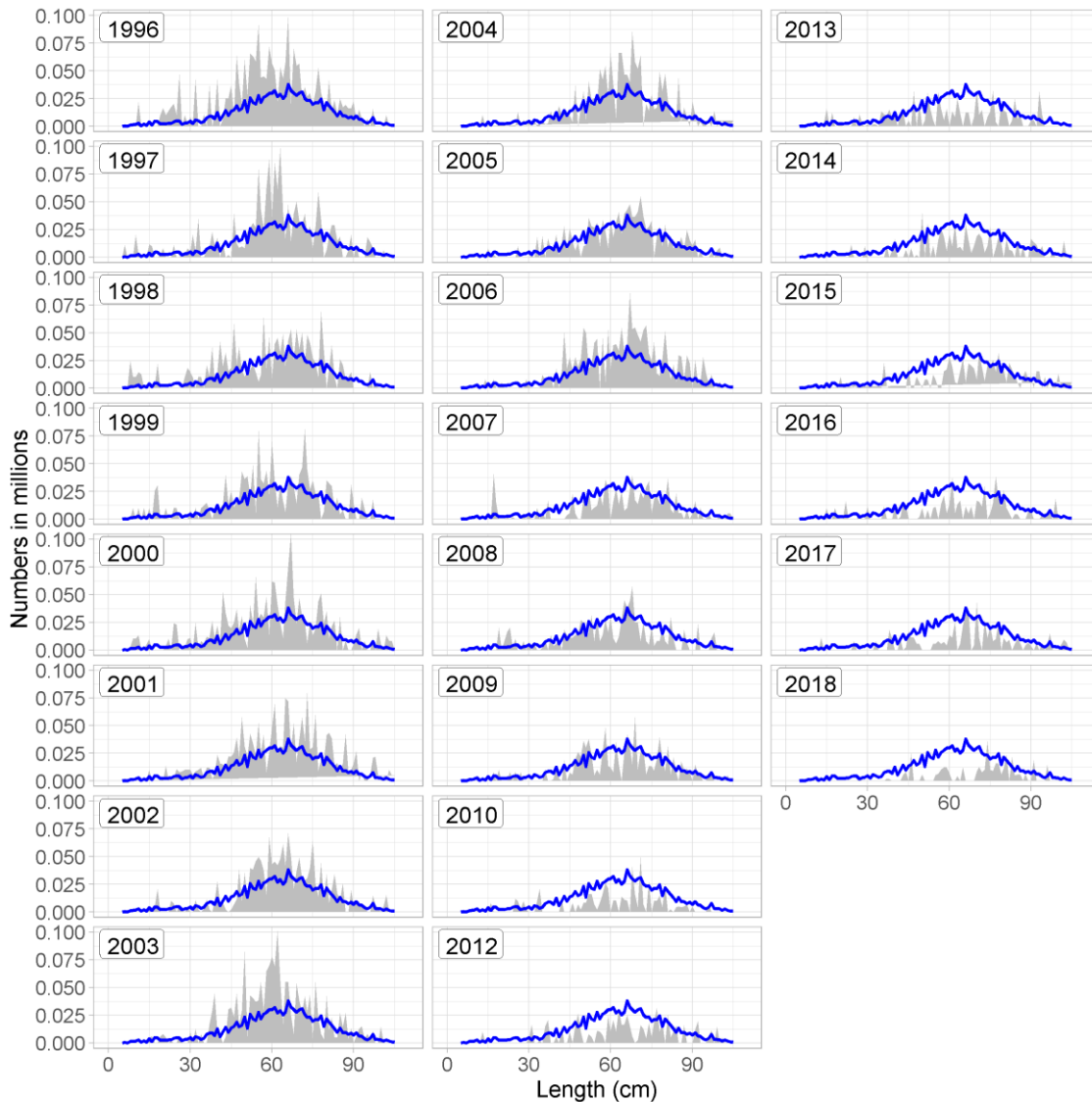
*Mynd 11. Hlýri. Útbreiðsla í stofnmælingu botnfiska að vori 2019*



**Figure 12. Spotted wolffish. Spatial distribution of the index from the spring survey. Note that the Iceland-Faroe ridge was not sampled in 1996-2003.**

*Mynd 12. Hlýri. Dreifing vísitölu í stofnmælingu botnfiska að vori. Ath. að engin tog voru tekin á Íslands-Færeyjahrygg árin 1996-2003.*

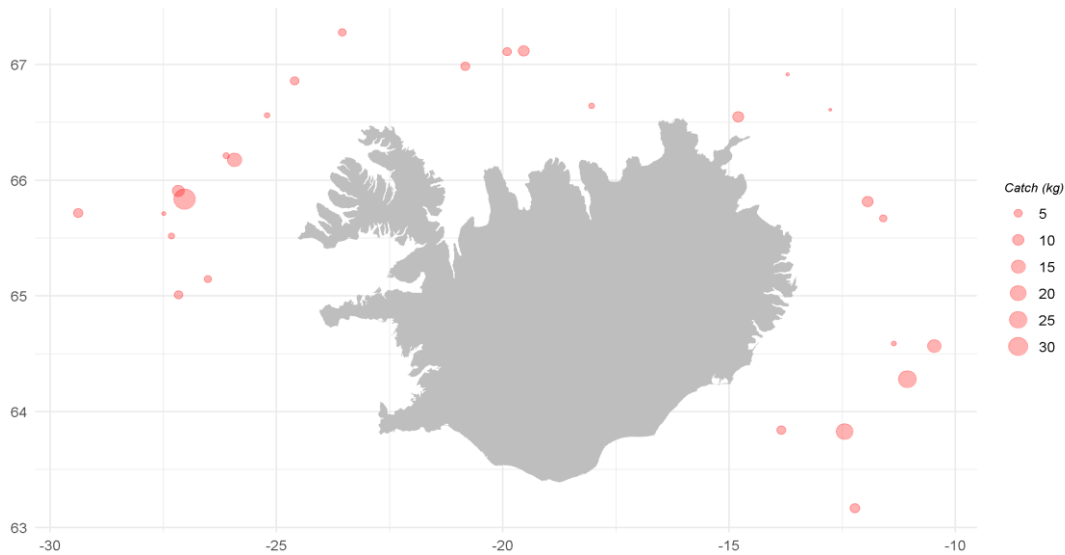
The mean length of spotted wolffish in the autumn survey has increased from 1996 (58.8 cm) to 2018 (70.8 cm). This is in accordance with the spring survey and the reason is decreased abundance of fish smaller than 60 cm (Figure 13). Number of spotted wolffish caught in the autumn survey was on the average 250 fish in the years 1996-2006. Since then the number has been decreasing and was on average 90 fish in the years 2010-2017, but 54 fish were caught in the 2018 survey.



**Figure 13. Spotted wolffish. Length disaggregated abundance indices from the autumn survey. The blue line shows the mean for all years.**

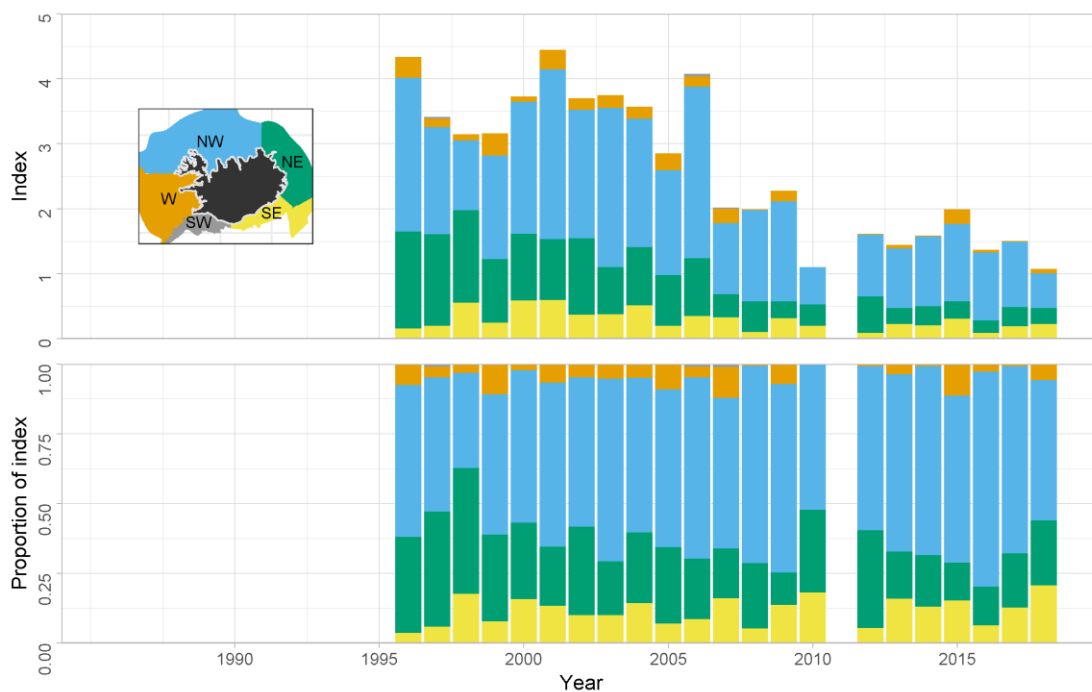
*Mynd 13. Hlýri. Lengdarskiptar vísitölur úr stofnmælingu botnfiska að hausti frá 1996 ásamt meðaltali allra ára (blá lína).*

Spotted wolffish spawn in late summer or autumn and the distribution of the catch is similar in the autumn and spring surveys, which may suggest a proximity between spawning and feeding grounds. (Figure 11 and 14). However, in 1996-2003, a lower proportion of the autumn survey biomass was measured in the NE area as compared to the spring survey. Most spotted wolffish in the autumn survey in 2018 were caught at the slope areas northwest of Iceland, but the biomass there has been decreasing since 2006. The biomass index in the NE area has been decreasing from 1996, in accordance to the spring survey (Figure 14 and 15).



**Figure 14. Spotted wolffish. Spatial distribution of spotted wolffish in the autumn survey in 2018.**

*Mynd 14. Hlýri. Útbreiðsla í stofnmælingu botnfiska að hausti árið 2018.*



**Figure 15. Spotted wolffish. Spatial distribution of the index from the autumn survey.**

*Mynd 15. Hlýri. Dreifing vísitölu í stofnmælingu botnfiska að hausti.*

## MANAGEMENT

The Ministry of Industries and Innovation is responsible for management of the Icelandic fisheries and implementation of legislation. Spotted wolffish was included in the ITQ system in 2018. The MRI advised catch based on  $F_{\text{proxy}}$  for the first time in the fishing year 2012/2013. For the first four fishing years, the advice was based on average catch in the years 1985-1997 which was around 900 tonnes and the stock size was rather stable during these years. When advising catch for the fishing year 2016/2017, it was decided to use 70% of the average  $F_{\text{proxy}}$  of the years 2001-2015 as target  $F_{\text{proxy}}$ , but the biomass index from the spring survey decreased about 20% at this time. Catches of spotted wolffish in the fishing years 2012/2013-2016/2017 were around 100% higher than recommended by the MRI (Table 3).

**Table 3. Spotted wolffish. Recommended TAC, national TAC, and landings (tonnes).**

*Tafla 3. Hlýri. Tillögur Hafrannsóknastofnunar um hámarksafla, ákvörðun stjórnvalda um aflamark og landaður afli (tonn).*

<b>FISHING YEAR</b>	<b>REC. TAC</b>	<b>NATIONAL TAC</b>	<b>CATCH</b>
<b>2012/13</b>	900	-	2041
<b>2013/14</b>	900	-	2241
<b>2014/15</b>	900	-	1636
<b>2015/16</b>	900	-	1886
<b>2016/17</b>	1128	-	1548
<b>2017/18</b>	1080	-	1528
<b>2018/19</b>	1001	1001	
<b>2019/20</b>	375		

## ADVICE

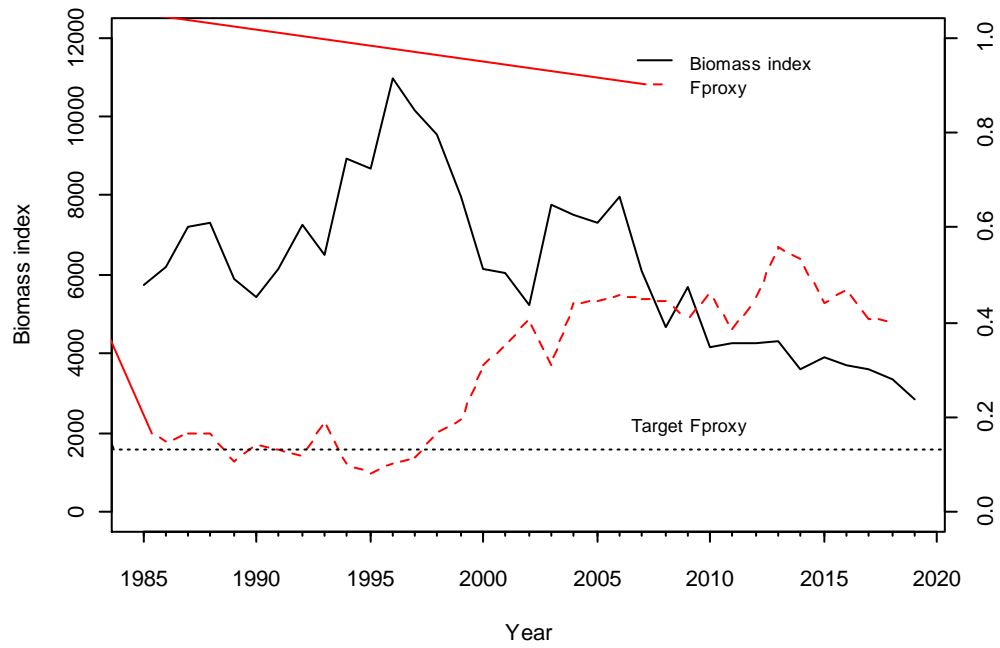
This advice follows ICES framework for stocks where reliable stock biomass indices are available, but analytical age-length based assessments are not feasible. Spring survey biomass index with catch, is used to calculate  $F_{\text{proxy}}$  (catch/survey biomass) (Figure 16). The target  $F_{\text{proxy}}$  of 0.131 was defined as of the mean from the reference period of 1985-1998. As the 2019 spring survey biomass was 2866, the MFRI advises that catches in the 2019/2020 fishing year should be no more than 375 tonnes (Table 4).

This year the basis of the  $F_{\text{proxy}}$  was changed due to low spawning stock biomass and poor recruitment and thus the  $F_{\text{proxy}}$  applied last year is no longer considered precautionary. This period was chosen as fishing pressure did not have any observed detrimental effects on the stock biomass

**Table 4. Spotted wolffish. Advice calculations**

*Tafla 4. Hlýri. Útreikningur ráðgjafar*

Index 2019	2866
Target $F_{\text{proxy}}$	0.131
Advice 2018	1001 t
Uncertainty cap	Not applied
Advice 2019	$2866 \times 0.131 = 375$ t



**Figure 16. Spotted wolffish.  $F_{proxy}$  (catch/survey biomass). The target  $F_{proxy}$  is set as the mean of the reference period of 1985-1998.**

**Mynd 16. Hlýri. Vísitala veiðihlutfalls ( $F_{proxy} = afli/vísitala$ ). Markgildi ( $F_{proxy}$  target) byggir á meðaltali áráanna 1985-1998.**